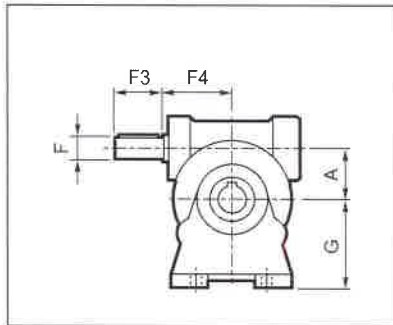


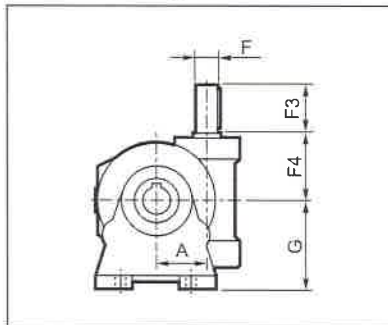


## VF...HS - W...HS

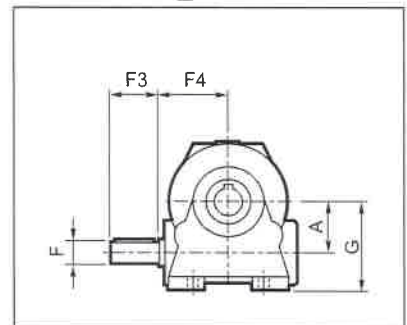
**VF\_A..HS**



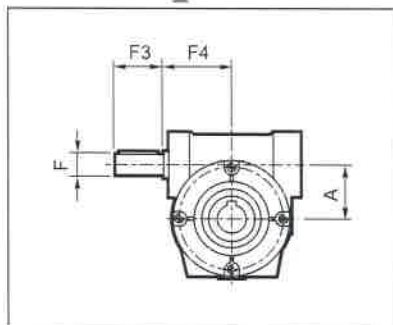
**VF\_V..HS**



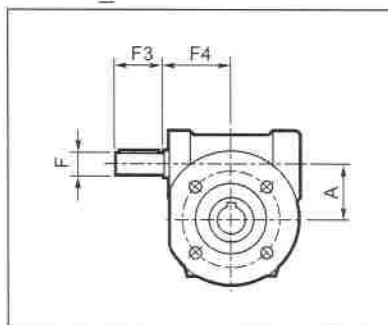
**VF\_N..HS**



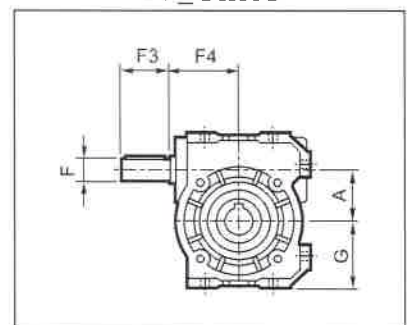
**VF\_P..HS**



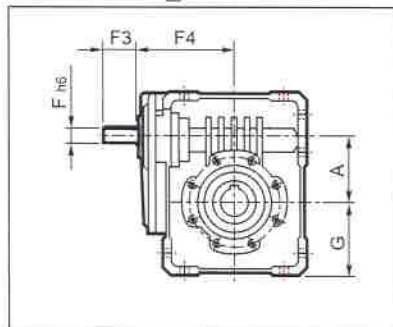
**VF\_FA/FC/FR/F..HS**



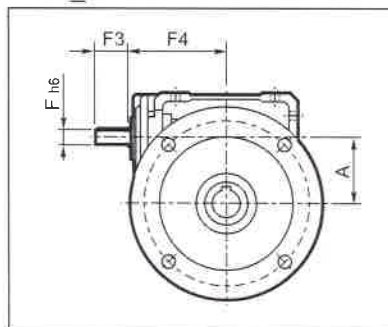
**VF\_U..HS**



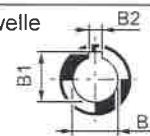
**W\_U..HS**



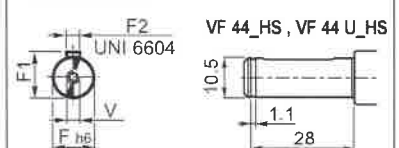
**W\_UF/UFC/UFCR..HS**



Abtriebswelle



Antriebswelle



	A	B	B1	B2	F	F1	F2	F3	F4	G	V	Kg
<b>VF 30_HS</b>	30	14 H7	16.3	5	9	10.2	3	20	50	55	—	1.1
<b>VF 30_U_HS</b>										47		
<b>VF 44_HS</b>	44.6	18 H7	20.8	6	11	12.5	4	30	54	72	—	2.0
<b>VF 44_U_HS</b>										55		
<b>VF 49_HS</b>	49.5	25 H7	28.3	8	16	18	5	40	65	82	M6x16	3.0
<b>VF 49_U_HS</b>										64.5		
<b>W 63_HS</b>	62.17	25 H7	28.3	8	18	20.5	6	40	110.5	72.5	M6x16	6.4
<b>W 75_HS</b>	75	30(28) H7	33.3(31.3)	8	19	21.5	6	40	128	87	M6x16	10.0
<b>W 86_HS</b>	86.9	35 H7	38.3	10	25	28	8	50	144	100	M8x19	14.1
<b>W 110_HS</b>	110.1	42 H7	45.3	12	25	28	8	60	168	125	M8x19	27
<b>VF 130_HS</b>	130	45 H7	48.8	14	30	33	8	60	160	195	M8x20	49
<b>VF 150_HS</b>	150	50 H7	53.8	14	35	38	10	65	185	220	M8x20	60
<b>VF 185_HS</b>	185.4	60 H7	64.4	18	40	43	12	70	214.5	254	M8x20	94
<b>VF 210_HS</b>	210	90 H7	95.4	25	48	51.5	14	110	230	335	M16x40	175
<b>VF 250_HS</b>	250	110 G7	116.4	28	55	59	16	110	274	380	M16x40	275

Die mit den anderen Konfigurationen gemeinen Abmessungen sind auf Seiten 106 - 161 angegeben.



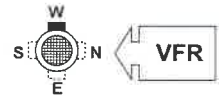
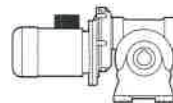
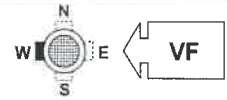
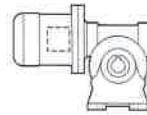
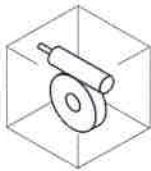
**VF 130 A ... VF 250 A**

**VFR 130 A ... VFR 250 A**

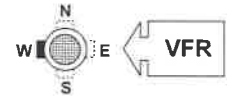
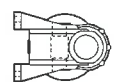
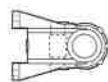
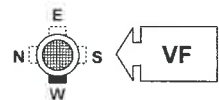
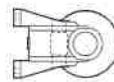
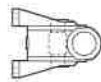
**\_HS**

**\_P (IEC)**

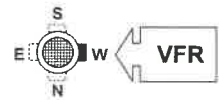
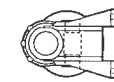
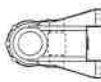
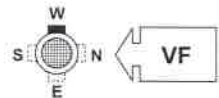
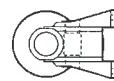
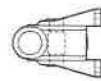
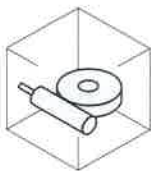
**B3**



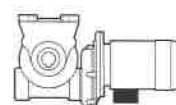
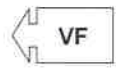
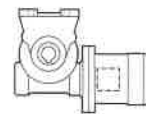
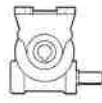
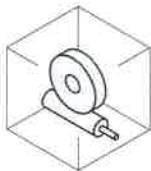
**B6**



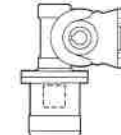
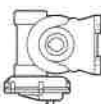
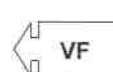
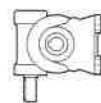
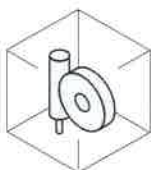
**B7**



**B8**



**V5**



**V6**

