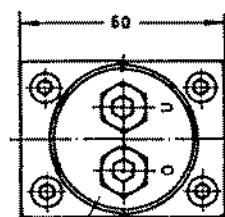
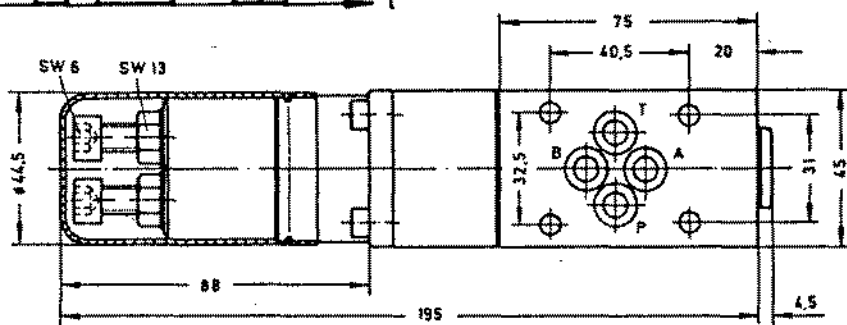
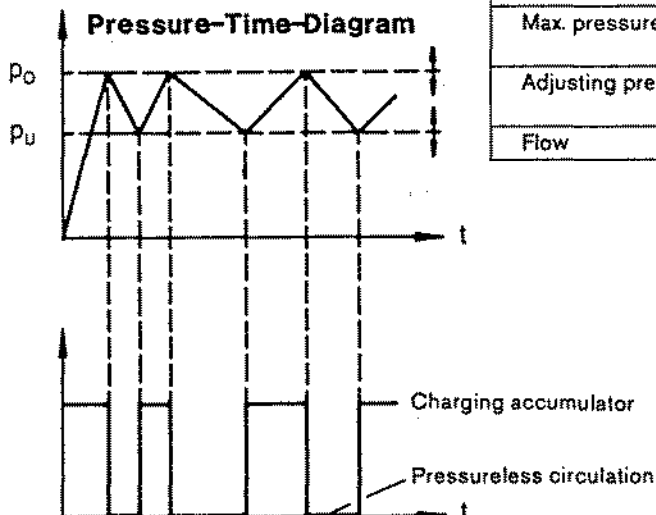
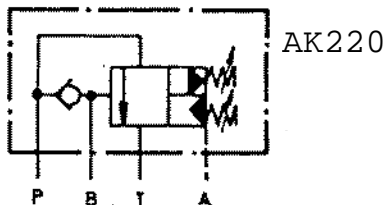
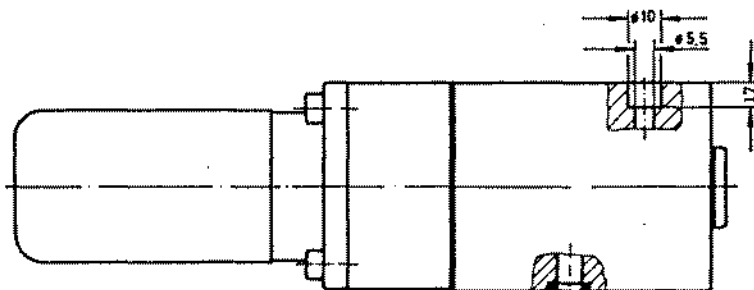


Type: SLA-6R

Specifications	
Description	Accumulator charging valve
Mounting position	optional
Ambient temperature	-25 ... +50°C
Fluid	Mineral-oil based hydraulic-fluids (DIN/ISO), others on request
Viscosity	12 ... 300 mm <sup>2</sup> /s
Fluid temperature	-20 ... +80°C
Filtration	Contamination class 10, according to NAS 1638 to be realized with filter $\beta_{25} = 75$
Design	Main stage: spool type valve 2 Pilot stages: poppet-type valves $P_{min}$ and $P_{max}$ adjustable independant from each other. Check valve incorporated.
Mounting type	Subplate mounting; NG6 - ISO 6263
Flow direction	see symbol
Max. pressure	in P, B: 315 bar T: 300 bar in A: 2 bar
Adjusting pressure	25 ... 100 bar; $\Delta p_{min} = 5 ... 10$ bar 60 ... 210 bar; $\Delta p_{min} = 10 ... 15$ bar
Flow	max. = 40 l/min; min. = 1 l/min

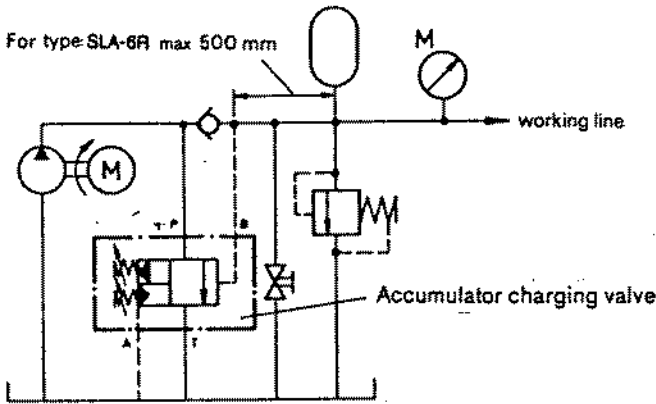


Drawn  
without  
cover cap



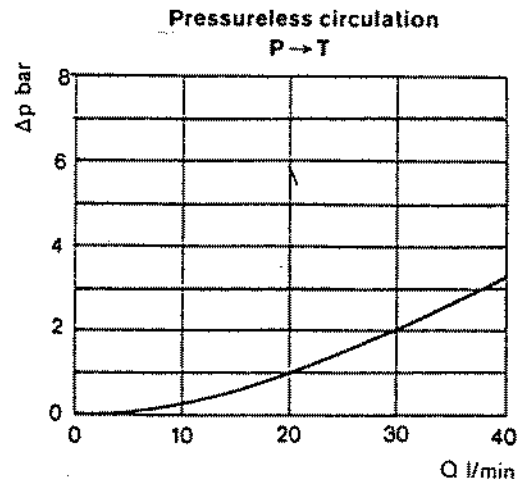
Weight: about 2,1 kg

## Circuit diagram



## Performance curves

$T = 50^{\circ}\text{C}$ ,  $v = 36 \text{ mm}^2/\text{s}$

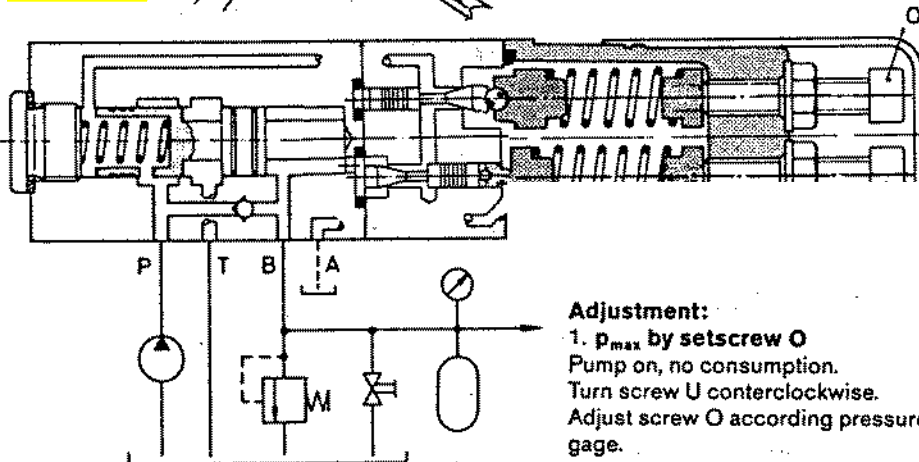
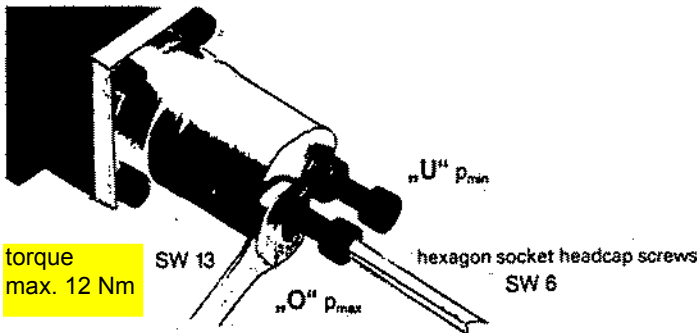
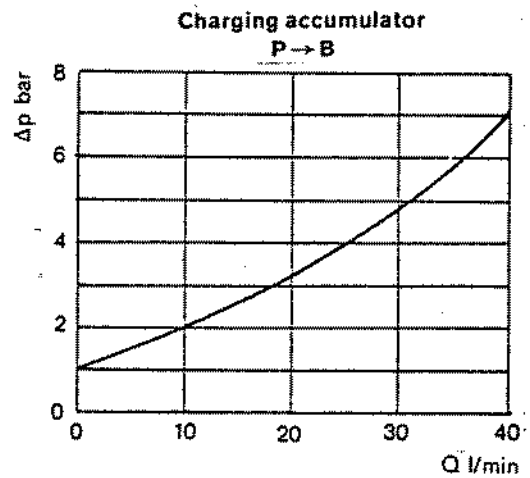


## Function

For accumulator-systems with fixed capacity pump.

- Charging accumulator:  
in the range  $p_0 \rightarrow p_{\min} \rightarrow p_{\max}$
- Pressureless circulation:  
in the range  $p_{\max} \rightarrow p_{\min}$

$p_{\min}$  and  $p_{\max}$  adjustable independent from each other. Variable switching difference.



Type	Order No.	Setting range for changeover pressure in bar	min. difference of changeover pressures in bar
AK 22033	38653	25-110	5.....10
AK 22032	39186	60-210	10.....15
AK 22031	39579	150-315	15.....20

Mounting set: SLA-6  
M5x55 DIN 912 405-1328-019-055