

SystemStak™

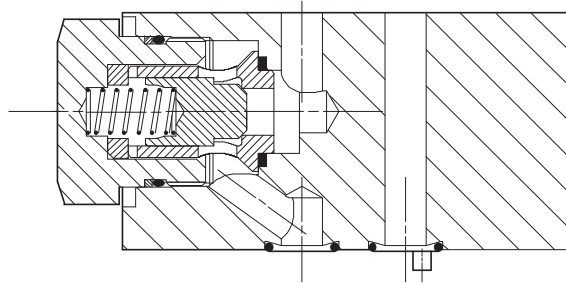
Direct Check Valves

DGMDC-3-41

Typical Section

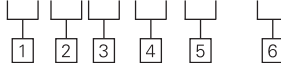
General Description

These valves allow free flow in one direction in the line in which the check valve element(s) is (are) located; flow in the opposite direction is not possible.



Model Code

DGMDC -3- * - * * (-* *) - 41



1 Direction of flow

X – Free flow away from actuator
Y – Free flow towards actuator

2 Check location

A – A line
B – B line
P – P line with free flow towards actuator (X)
T – T line with free flow away from actuator (Y)

3 Check valve opening/ cracking pressure

K – 1 bar (14.5 psi)
M – 2,5 bar (36 psi)
N – 5 bar (72 psi)

4 Check location (second element of dual model)

Only available as model type DGMDC-3-Y-A*-B*-4*
B – B line

5 Check valve opening/ cracking pressure (second function of dual model)

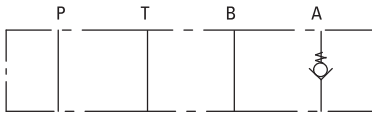
Options as in 3

6 Design number, 40 series

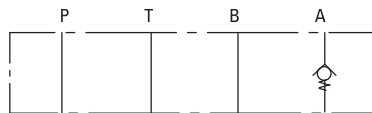
Subject to change. Installation dimensions unchanged for design numbers 40 to 49 inclusive.

Functional Symbols

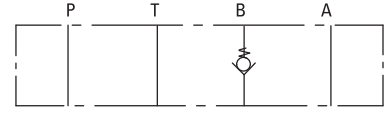
DGMDC-3-X-A*



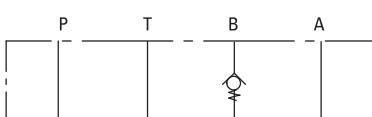
DGMDC-3-Y-A*



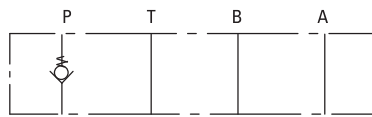
DGMDC-3-X-B*



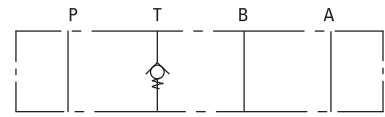
DGMDC-3-Y-B*



DGMDC-3-Y-P*



DGMDC-3-X-T*



DGMDC-3-Y-A*-B*

