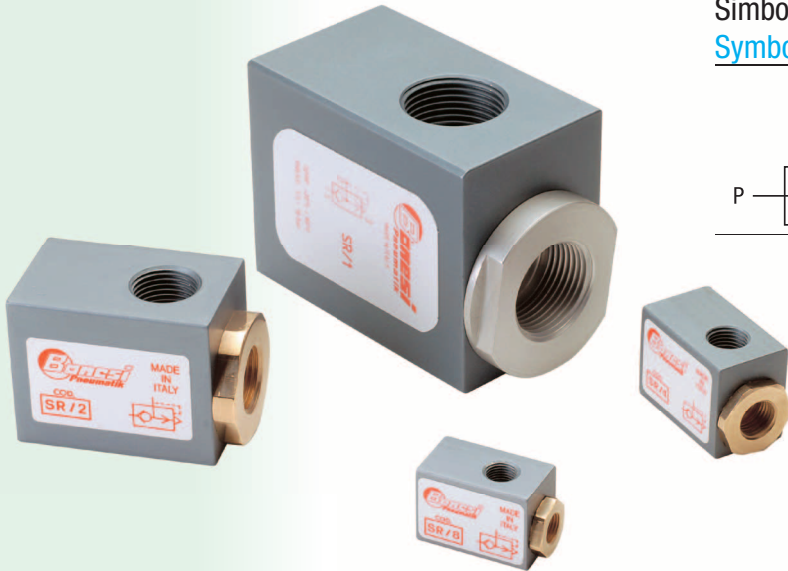


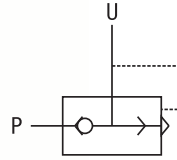
Valvole scarico rapido

Quick exhaust valves

Serie Series SR



Simbolo
Symbol



Connessione
Connection

Codice
Code

1/8"	SR-8
1/4"	SR-4
1/2"	SR-2
1"	SR-1

Caratteristiche tecniche costruttive

Technical and constructive features

Fluido Fluid	Aria filtrata Filtered air
Pressione di esercizio Operating pressure	1 ÷ 10 bar
Temperatura di esercizio Temperature range	-10°C +70°C
Materiali Materials	Corpi Al - guarnizioni NBR componenti ottone Bodies Al - seals NBR components brass

Connessione Connection		1/8"	1/4"	1/2"	1"	
Portate Flow rates	6 bar	NI/min	620	1350	3880	16000
Portate in scarico libero Flow rates with open exhaust		NI/min	980	2100	5400	1900
Peso Weight		g	51	96	332	1000

Le dimensioni - Dimensions

Connessione Connection	L	M	N	CH1	P
A					
1/8"	35	4	23	16	18
1/4"	42	4	32	23	25
1/2"	62	7	50	38	40
1"	100	10	80	50	60

