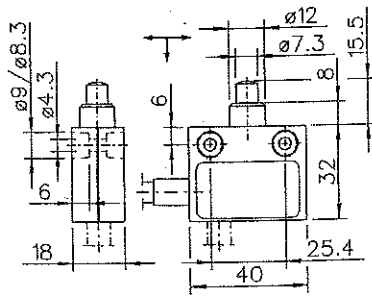


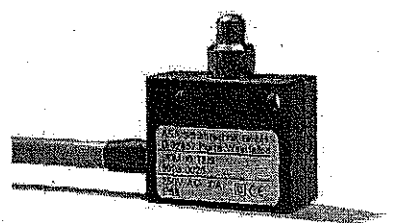
V8+2-6

**ASA**  
Schalttechnik GmbH



Approaching angle: max 20°, approaching speed: max 1 m/s

SDM 5 T21S



Type	No.	Contact	Current capacity (A)	Wiring diagram	max. switch force (N)	Cable outlet
SDM 5 T21S	8023 0024	2 changeover contacts	5		1.80	side
SDM 5 T21S U	8023 0025	2 changeover contacts	5		1.80	bottom
SDM 10 T21S	8023 0026	2 changeover contacts	10		2.20	side
SDM 10 T21S U	8023 0027	2 changeover contacts	10		2.20	bottom
SDM 01 T21S	8023 0028	2 changeover contacts	0.1		2.30	side
SDM 01 T21S U	8023 0029	2 changeover contacts	0.1		2.30	bottom