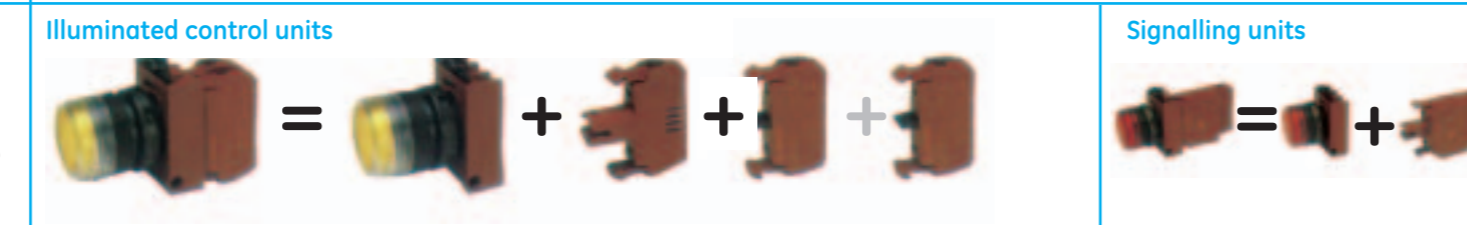
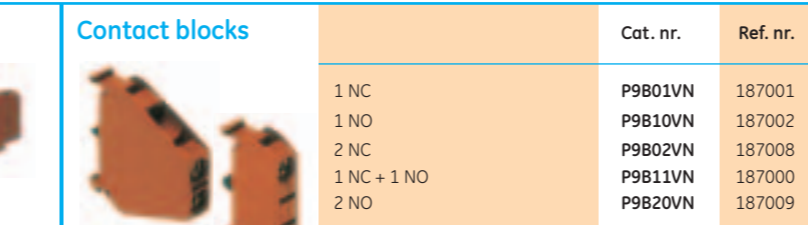




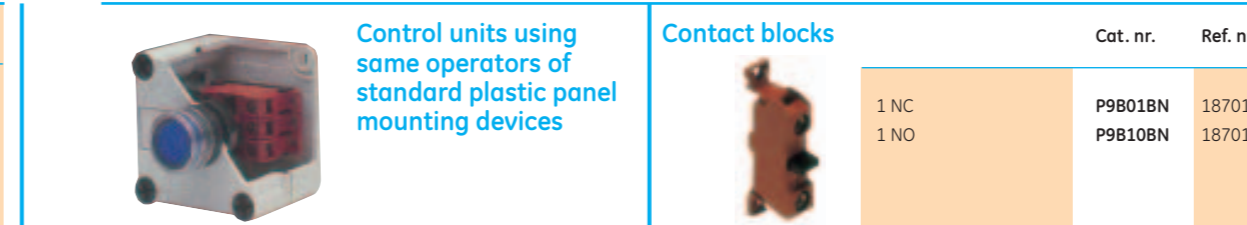
Standard control units	Push-button with flush cap	Push-button with raised cap	Push-button mushroom head	Push-button emergency push-twist to release mushroom head	Push-button emergency with positive break push-twist to release mushroom head	Selector switch with knob	Selector switch with lever	Selector switch with key (code 3095) key removal in all positions	Joystick
Round satin chrome P9M	P9MPN Ref. nr.N.. 184000R.. 184001V.. 184002G.. 184003L.. 184006	P9MPN+S Ref. nr.N.. 184010R.. 184011V.. 184012G.. 184013L.. 184016	P9MEM4+N Ref. nr.N.. 184030R.. 184031V.. 184032G.. 184033	P9MER4RN 184070	P9MSE4RN 184070	I-II fixed ● P9MSMD0N 184110 ● P9MSVD0N 184370 I-O-II fixed ● P9MSMZ0N 184200 ● P9MSVZ0N 184379 I-O-II spring return ● P9MSMZ3N 184320 ● P9MSVZ3N 184391 ● P9MSCZ0T95 184402 ● P9MSVZ0T95 184439 I-O-II spring return ● P9MSCZ3C95 184467	I-II fixed ● P9MSMD0N 184110 ● P9MSVD0N 184370 I-O-II fixed ● P9MSMZ0N 184200 ● P9MSVZ0N 184379 I-O-II spring return ● P9MSMZ3N 184320 ● P9MSVZ3N 184391 ● P9MSCZ0T95 184402 ● P9MSVZ0T95 184439 I-O-II spring return ● P9MSCZ3C95 184467	I-II fixed ● P9MSMD0N 184110 ● P9MSVD0N 184370 I-O-II fixed ● P9MSMZ0N 184200 ● P9MSVZ0N 184379 I-O-II spring return ● P9MSMZ3N 184320 ● P9MSVZ3N 184391 ● P9MSCZ0T95 184402 ● P9MSVZ0T95 184439 I-O-II spring return ● P9MSCZ3C95 184467	fixed pos. ● P9MMN2F 184700 transient pos. ● P9MMN2T 184701 ● P9MMN4F 184720 ● P9MMN4T 184721
Round plastic P9X	P9XPN Ref. nr.N.. 185000R.. 185001V.. 185002G.. 185003L.. 185006	P9XPN+S Ref. nr.N.. 185010R.. 185011V.. 185012G.. 185013L.. 185016	P9XEM4+N Ref. nr.N.. 185040R.. 185041	P9XER4RN 185070	P9XER4RN 185077	I-II fixed ● P9XSM0DN 185110 ● P9XSMVD0N 185370 I-O-II fixed ● P9XSMZ0N 185200 ● P9XSMVZ0N 185379 I-O-II spring return ● P9XSMZ3N 185320 ● P9XSMVZ3N 185391 ● P9XSCZ0K95 185402 ● P9XSCZ0T95 185439 I-O-II spring return ● P9XSCZ3C95 185467	I-II fixed ● P9XSM0DN 185110 ● P9XSMVD0N 185370 I-O-II fixed ● P9XSMZ0N 185200 ● P9XSMVZ0N 185379 I-O-II spring return ● P9XSMZ3N 185320 ● P9XSMVZ3N 185391 ● P9XSCZ0K95 185402 ● P9XSCZ0T95 185439 I-O-II spring return ● P9XSCZ3C95 185467	I-II fixed ● P9XSM0DN 185110 ● P9XSMVD0N 185370 I-O-II fixed ● P9XSMZ0N 185200 ● P9XSMVZ0N 185379 I-O-II spring return ● P9XSMZ3N 185320 ● P9XSMVZ3N 185391 ● P9XSCZ0K95 185402 ● P9XSCZ0T95 185439 I-O-II spring return ● P9XSCZ3C95 185467	fixed pos. ● P9XMMN2F 185700 transient pos. ● P9XMMN2T 185701 ● P9XMMN4F 185720 ● P9XMMN4T 185721
Square plastic P9S	P9SPN Ref. nr.N.. 186000R.. 186001V.. 186002G.. 186003L.. 186006	P9SPN+S Ref. nr.N.. 186010R.. 186011V.. 186012G.. 186013L.. 186016	P9SEM3RN 186031	P9SER4RA 186072	P9SER4RA 186072	I-II fixed ● P9SSMD0N 186110 ● P9SSVD0N 186402 I-O-II fixed ● P9SSMZ0N 186200 ● P9SSVZ0N 186379 I-O-II spring return ● P9SSMZ3N 186320 ● P9SSVZ3N 186391 ● P9SSCZ0K95 186402 ● P9SSCZ0T95 186439 I-O-II spring return ● P9SSCZ3C95 186467	I-II fixed ● P9SSMD0N 186110 ● P9SSVD0N 186402 I-O-II fixed ● P9SSMZ0N 186200 ● P9SSVZ0N 186379 I-O-II spring return ● P9SSMZ3N 186320 ● P9SSVZ3N 186391 ● P9SSCZ0K95 186402 ● P9SSCZ0T95 186439 I-O-II spring return ● P9SSCZ3C95 186467	I-II fixed ● P9SSMD0N 186110 ● P9SSVD0N 186402 I-O-II fixed ● P9SSMZ0N 186200 ● P9SSVZ0N 186379 I-O-II spring return ● P9SSMZ3N 186320 ● P9SSVZ3N 186391 ● P9SSCZ0K95 186402 ● P9SSCZ0T95 186439 I-O-II spring return ● P9SSCZ3C95 186467	Double function with indicator light white lens P9DPLVRG00 186881 P9DPLVRG01 186891



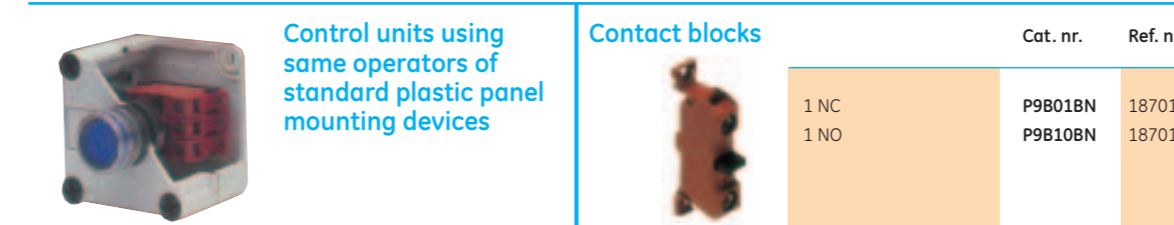
Illuminated control units	Illuminated push-button with flush cap	Illuminated push-button with raised cap	Illuminated push-button with mushroom head	Illuminated push-button push-pull to release with mushroom head	Illuminated selector switch	Pilot light diffused lens	Pilot light unilob full voltage ≥ BA95 max. 2W not included
Illuminated push-button with flush cap	P9MPL Ref. nr.R.. 184491V.. 184492G.. 184493B.. 184497	P9MPL+SD Ref. nr.R.. 184501V.. 184502G.. 184503B.. 184507	P9MEM4+L Ref. nr.R.. 184511V.. 184512G.. 184513L.. 184516	P9MET4RL1 184561	I-II fixed Ref. nr.R.. 184591 I-O-II fixed Ref. nr.R.. 184601 I-O-II spring return Ref. nr.R.. 184631	P9ML Ref. nr.R.. 184791V.. 184792G.. 184793B.. 184797	P9ML Ref. nr.R.. 184791V.. 184792G.. 184793B.. 184797
Illuminated push-button with raised cap	P9MPL Ref. nr.R.. 184491V.. 184492G.. 184493B.. 184497	P9MPL+SD Ref. nr.R.. 184501V.. 184502G.. 184503B.. 184507	P9MEM4+L Ref. nr.R.. 184511V.. 184512G.. 184513L.. 184516	P9MET4RL1 184561	I-II fixed Ref. nr.R.. 184591 I-O-II fixed Ref. nr.R.. 184601 I-O-II spring return Ref. nr.R.. 184631	P9ML Ref. nr.R.. 184791V.. 184792G.. 184793B.. 184797	P9ML Ref. nr.R.. 184791V.. 184792G.. 184793B.. 184797
Illuminated push-button with mushroom head	P9MPL Ref. nr.R.. 184491V.. 184492G.. 184493B.. 184497	P9MPL+SD Ref. nr.R.. 184501V.. 184502G.. 184503B.. 184507	P9MEM4+L Ref. nr.R.. 184511V.. 184512G.. 184513L.. 184516	P9MET4RL1 184561	I-II fixed Ref. nr.R.. 184591 I-O-II fixed Ref. nr.R.. 184601 I-O-II spring return Ref. nr.R.. 184631	P9ML Ref. nr.R.. 184791V.. 184792G.. 184793B.. 184797	P9ML Ref. nr.R.. 184791V.. 184792G.. 184793B.. 184797
Illuminated push-button push-pull to release with mushroom head	P9MPL Ref. nr.R.. 184491V.. 184492G.. 184493B.. 184497	P9MPL+SD Ref. nr.R.. 184501V.. 184502G.. 184503B.. 184507	P9MEM4+L Ref. nr.R.. 184511V.. 184512G.. 184513L.. 184516	P9MET4RL1 184561	I-II fixed Ref. nr.R.. 184591 I-O-II fixed Ref. nr.R.. 184601 I-O-II spring return Ref. nr.R.. 184631	P9ML Ref. nr.R.. 184791V.. 184792G.. 184793B.. 184797	P9ML Ref. nr.R.. 184791V.. 184792G.. 184793B.. 184797
Illuminated selector switch	P9MPL Ref. nr.R.. 184491V.. 184492G.. 184493B.. 184497	P9MPL+SD Ref. nr.R.. 184501V.. 184502G.. 184503B.. 184507	P9MEM4+L Ref. nr.R.. 184511V.. 184512G.. 184513L.. 184516	P9MET4RL1 184561	I-II fixed Ref. nr.R.. 184591 I-O-II fixed Ref. nr.R.. 184601 I-O-II spring return Ref. nr.R.. 184631	P9ML Ref. nr.R.. 184791V.. 184792G.. 184793B.. 184797	P9ML Ref. nr.R.. 184791V.. 184792G.. 184793B.. 184797



Signalling units	Pilot light diffused lens	Pilot light unilob full voltage ≥ BA95 max. 2W not included
Pilot light diffused lens	P9ML Ref. nr.R.. 184791V.. 184792G.. 184793B.. 184797	P9ML Ref. nr.R.. 184791V.. 184792G.. 184793B.. 184797
Pilot light unilob full voltage ≥ BA95 max. 2W not included	P9ML Ref. nr.R.. 184791V.. 184792G.. 184793B.. 184797	P9ML Ref. nr.R.. 184791V.. 184792G.. 184793B.. 184797

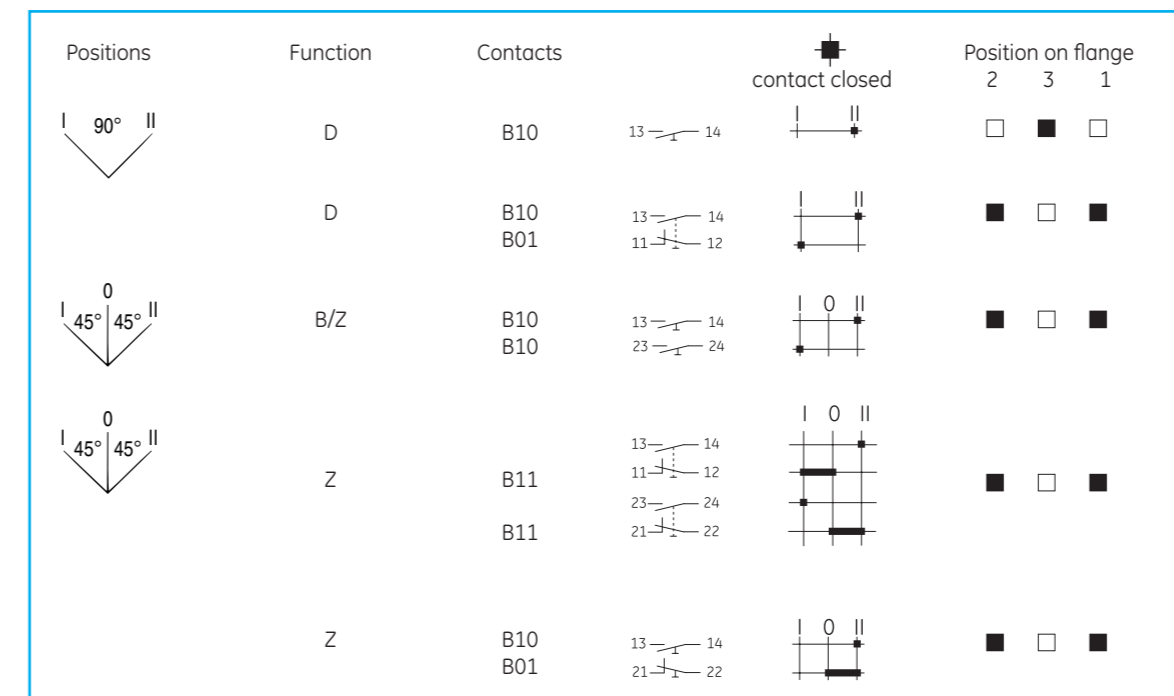


Contact blocks	1 NC, 1 NO, 2 NC, 1 NC + 1 NO, 2 NO	Cat. nr.	Ref. nr.
1 NC, 1 NO, 2 NC, 1 NC + 1 NO, 2 NO	P9B01VN 187001 P9B10VN 187002 P9B02VN 187008 P9B11VN 187000 P9B20VN 187009		
Full voltage	Full voltage ≥ BA95 max. 380V-2W not included	P9PDNV0	187020
Resistor	F110/220V ≥ BA95 60V-1.2W included 220-240V ≥ BA95 130V-2W included	P9PRNVJ P9PRNVN	187023 187024
Transformer 50/60 Hz	110 - 120V 220 - 250V BA95 6V-1.5W included	P9PTNVJ P9PTNVN	187030 187031
Multifunction⁽¹⁾	Full voltage 24V BA95 24V-2W included 110 - 120V 220 - 250V BA95 6V-0.6W included	P9PDMVD P9PTMVJ P9PTMVN	187040 187045 187046
Transformer 50/60 Hz	110 - 120V 220 - 250V BA95 6V-0.6W included	P9PTMVJ P9PTMVN	187045 187046
Integrated LED	Standard light 24V AC/DC Red 120V AC/DC Red 230V AC/DC Red Flashing light 24V AC/DC Red 120V AC/DC Red 230V AC/DC Red	P9 PLN VDR* 197004 P9 PLN VJR* 197010 P9 PLN VNR* 197016 P9 PLF VDR* 197022 P9 PLF VJR* 197028 P9 PLF VNR* 197034	

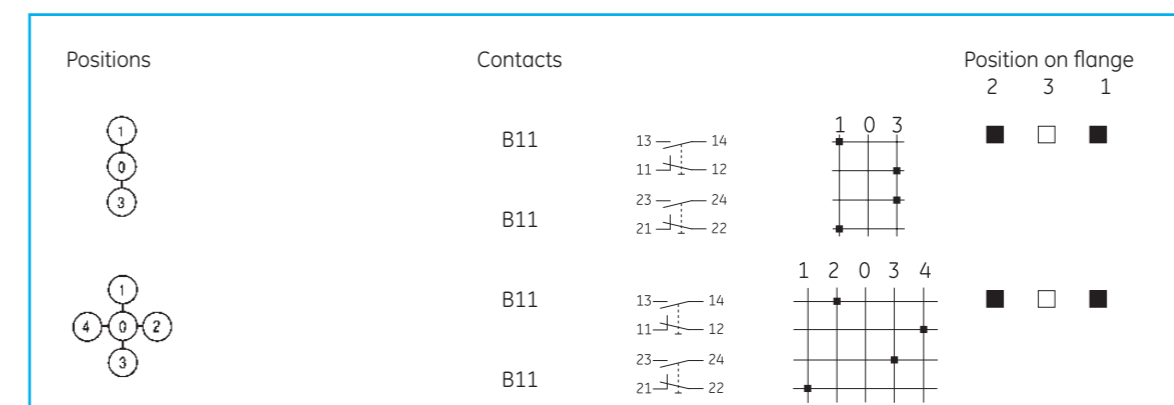


Control units using same operators of standard plastic panel mounting devices	1 NC, 1 NO	Cat. nr.	Ref. nr.
1 NC, 1 NO	P9B01BN 187017 P9B10BN 187018		
Full voltage	Full voltage ≥ BA95 max. 380V-2W not included	P9PDNB0	187070
Resistor	24V AC/DC Red 120V AC/DC Red 230V AC/DC Red	P9 PLNB DR* 197040 P9 PLNB JR* 197046 P9 PLNB NR* 197052	

Electrical diagrams
Selector switches



Joysticks



Catalogue number structure ⁽¹⁾

Push-buttons

STYLE	FORM	TYPE	CAP COLOUR	PUSH-BUTTON TYPE	LENS TYPE
M = Round satin chrome X = Round plastic S = Square plastic	P = Push-Button	N = Non illuminated L = Illuminated	N = Black R = Red V = Green G = Yellow L = Blue B = White	G = Flush S = Extended E = Recessed	D = Diffuser for illuminated push-button only

Selector switches

STYLE	FORM	TYPE	CAM	SPRING RETURN	COLOUR
M = Round satin chrome X = Round plastic S = Square plastic	S = Selector switches	M = Knob V = Lever L = Illuminated Knob	D = 2 positions Z = 3 positions	0 = Fixed 3 = From left & right L → 0 ← R 1 = L → 5 = ← R	N = Black R = Green V = Yellow G = Blue

Pilot lights

STYLE	FORM	TYPE	LENS TYPE
M = Round satin chrome X = Round plastic S = Square plastic	L = Pilot light	R = Red V = Green G = Yellow B = White	D = Diffused

Contact blocks

FORM	NORMALLY OPEN CONTACTS	NORMALLY CLOSED CONTACTS	TERMINAL TYPE	CONTACT TYPE
B = Contact Block	0 = None 1 = 1 NO	0 = None 1 = 1 NO	V = Standard screw B = Base mounting screw F = Faston	N = Normal A = Early closing R = Late opening

Power supplies

FORM	TYPE	STYLE	TERMINAL TYPE	VOLTAGE
P = Power supplies	D = Full voltage R = Resistor T = Transformer L = Led	0 = Normal M = Multi-function continuous/blinking D = Diode L = Long life T = Test F = Flashing	V = Standard screw B = Base mounting screw F = Faston	0 = Full voltage D = 24V J = 110-120V N = 220-240V

⁽¹⁾ Nomenclature keys are indicative only. Do not use for orders.

The complete range is shown in our general catalogue "Control and Automation Products"



Series P9

Main features

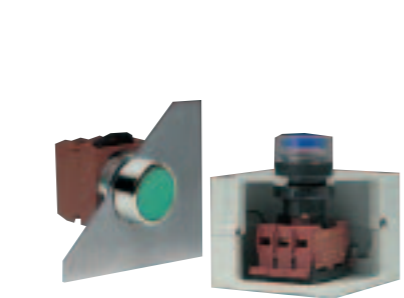


Shape, material and colours

The P9 line offers three types of operators:

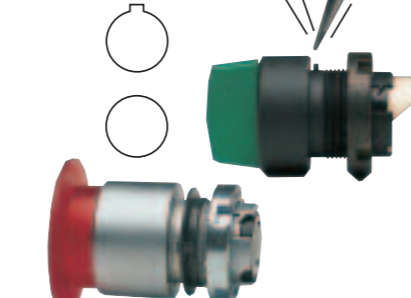
- round in satin chrome metal
- round in engineered thermoplastic
- square in engineered thermoplastic

Modern ergonomic P9 actuators are available in a wide variety of colours and styles, and are the result of superior industrial design experience. SERIES P9 satisfies any sophisticated industrial applications.



Mounting system

The P9 line offers a wide variety of operators, contact blocks and power supplies for panel mounting. Furthermore a range of contact blocks and power supplies are available for base mounting. The base mounting option is simple thanks to plastic enclosures fitted with a standard mounting adaptor, which allows a snap-on and secure fastening.

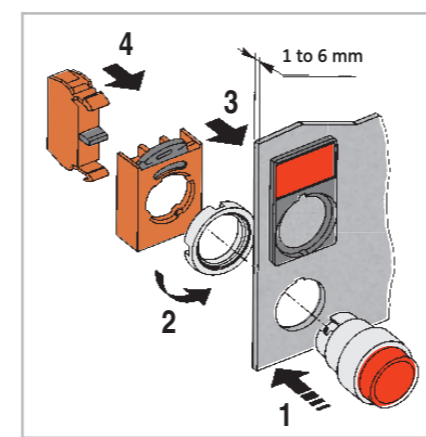


Fitting and positioning

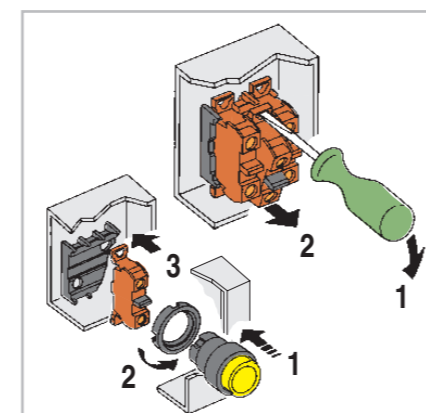
All the P9 operators are fitted with seal to ensure IP66 degree of protection. A correct tab on the operator allows the correct positioning on panels with holes drilled according to CENELEC EN 50007 standards (with notch). The tab also ensures panel stability and prevents unwanted rotations. The tab can be removed with a screwdriver for applications in holes without notch.

Technical data

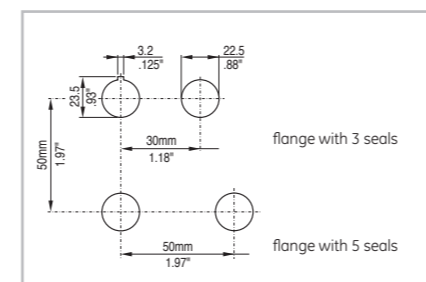
Panel mounting



Base mounting



Mounting



Fitted for panels 1 to 6 mm thick with holes drilled according to CENELEC EN 50007 standards.

Compliance with standards

IEC 947.5.1 - VDE 0660 - NF-C63140
CEI EN 60947.5.1 - UTE - BSI
NEMA - CENELEC EN 50007

Approvals

cULus B - RINA (I)
Lloyd's Register of Shipping (U.K.) - GOST
Bureau Veritas (F)
CE

Climatic protections

The standard versions are suitable for use in the following climates:

- Temperate climate
cat. 23/50 (DIN 50014)
- Wet climate
cat. 23/83 (DIN 50015)
- Hot wet climate
cat. 40/92 (DIN 50015)
- Variable wet climate
cat. FW24 (DIN 50016)

Temperature ranges

- Operation: from - 25°C up to + 70°C
- Storage: from - 40°C up to + 70°C

Degree of protection of the operators

IP66 according to CENELEC EN 60529 when they are mounted into enclosures with the same or a higher degree of protection. Suitable for using into enclosures NEMA type 1-3-3R-3S-4-4X-12-13 according to UL 508.

Degree of protection of the terminals

IP2x according to CENELEC EN 60529

Shock resistance

(according to MIL 202 B method 202 A)
1/2 sinusoid 11 ms:
No damage or disassembling at 100 G for all devices (except for the illuminated operators with transformer 38 G).

Vibration resistance

(according to IEC 68-2-6)
16 G with frequency range from 40 to 500 Hz and maximum shifting 0.75 mm. (peak-to-peak).

Rated insulation voltage

690V according to EN 60947.1

Impulse withstand voltage

4 kV according to EN 60947.1

Electric shock protection

- Class I according to IEC 536 for metal operators
- Class II (double insulation) according to IEC 536 for plastic operators.

Short-circuit protection

With fuses type gG of 16A according to IEC 269.1 and 269.3.

Electrical resistance of the contact

≤ 25 mΩ according to IEC 255, cat 3

Performances of the contacts

- Slow action
- Self-cleaning sliding
- NC "positive opening"
- Double movable contact
- Four switching points
- Double break

Identification of the terminals

According CENELEC EN 50013

Electrical performances

Rated thermal current I_{th} = 10A
Performances according IEC 947.5.1

Category AC15

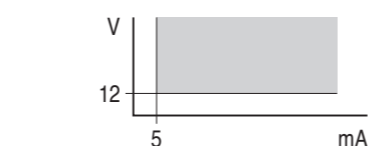
Voltage U _e (V)	24	48	60	110	220	380	500	600
Current I _e (A)	10	10	10	6	3	2	1.5	1.2

Category DC 13

Voltage U _e (V)	24	48	60	110	220	300
Current I _e (A)	2.5	1.4	1	0.55	0.27	0.2

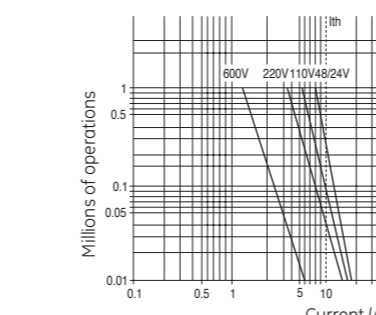
Performances according to CSA and UL AC/Heavy Duty (A600) - DC/Standard Duty (Q300)

Minimum operating range

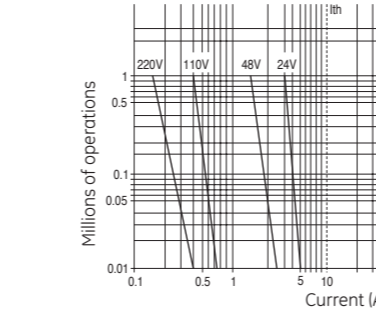


Electrical life

Alternate current 50/60 Hz cat. AC15



Direct current cat. DC 13



Common accessories

Bulbs BA9s

Filament type	Vn	Wn	Cat. nr.	Ref. nr.
6	0.6		BA9S606	187850
6	1.5		BA9S615	187851
12	2.0		BA9S122	187852
24	2.0		BA9S242	187853
30	2.1		BA9S30	187854
48	2.0		BA9S48	187855
60	1.2		BA9S6012	187856
130	2.0		BA9S130	187857

Mono led

Vn AC/DC ± 10%	Cat. nr.	Ref. nr.
6	BA9S6LR*	187871
12	BA9S12LR*	187881
24	BA9S24LR*	187891
48	BA9S48LR*	187901
110	BA9S110LR*	187911
Vn AC ± 10%	Cat. nr.	Ref. nr.
230	BA9S230LR*	187921

* Colour palette :

Insert holders

Supplied with neutral insert engravable on both sides
Standard 30 x 50 mm

Round plates

For emergency push-buttons diameter 59 mm (yellow background)

Plugs

Round Square 30x30mm
Rectangular 30x50mm

Tools

Locking ring wrench
Bulb extractor
Extractor for caps and lenses

Push-button stations

Empty versions in thermoplastic IP66

Light grey coloured
Panel or base mounted



Cover with holes
Knockouts conduit entry

For panel mounting



Accessories

Write-on plates

Illuminated, self adhesive,
20 x 20 mm
Black background engravable
for white texts

Without text

P9AELN 189030

With text (1)

Text	Cat. nr.	Ref. nr.
START	P9AELN202	189031
STOP	P9AELN201	189032
FORWARD	P9AELN214	189033
REVERSE	P9AELN215	189034
CLOSE	P9AELN205	189035
OPEN	P9AELN206	189036
UP	P9AELN204	189037
DOWN	P9AELN203	189038
LEFT	P9AELN222	189152
RIGHT	P9AELN224	189154

(1) Other languages on request

With symbols

Symbol	Cat. nr.	Ref. nr.
→	P9AELN006	189041
I	P9AELN028	189042
O	P9AELN029	189043
II	P9AELN035	189044
III	P9AELN038	189045
O-I	P9AELN039	189046
I-O-II	P9AELN042	189047

Earth terminal clamp

P9AEMT 189029

Empty versions in aluminium alloy

Grey coloured RAL 7012
Panel mounting

Cover with holes

No of holes	Cat. nr.	Ref. nr.
1	0805P1	170801
2	0805P2	170802
3	0805P3	170803
4	0805P4	170804
6	0805P6	170806
8	0805P8	170807
12	0805P12	170808
18	0805P18	170809
35	0805P35	170811

Equipped versions in thermoplastic IP66, one unit



Operators

Colour Diagram Namepl. Cat. nr. Ref. nr.

Flush push-button green I P9EPA01Y02 189010

Flush push-button white I P9EPA01Y03 189011

Emergency push-button with latch according to EN418 (on yellow cover) 0 P9EPAG1Y01N 189007

Flush push-buttons black ↑ P9EPA03Y05 189022

Flush push-buttons red 0

Flush push-buttons black ↓

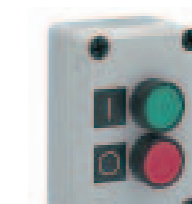
Flush push-buttons red 0

Flush push-buttons black ↓

Flush push-buttons red 0

Flush push-buttons black ↓

Equipped versions in thermoplastic IP66, two units



Operators

Colour Diagram Namepl. Cat. nr. Ref. nr.

Flush push-buttons green I P9EPA02Y01 189016

Flush push-buttons red 0

The catalogue numbers in bold are available from stock.

Equipped versions in thermoplastic IP66, three units



Operators

Colour Diagram Namepl. Cat. nr. Ref. nr.

Full voltage pilot light BA9S max 380V-2W not incl. I P9EPA03Y01 189018

Flush push-buttons green I

Flush push-buttons red 0

Flush push-buttons black ↑ P9EPA03Y05 189022

Flush push-buttons red 0

Flush push-buttons black ↓

Series P9

Control and Signalling Units



www.ge.com/ex/powerprotection
www.ge.com/eu/powerprotection



GE imagination at work

GE POWER CONTROLS Ltd
129-135 Camp Road
St Albans
Herts AL1 5HL
United Kingdom
Customer Service
Tel. 0800 587 1251
Fax 0800 587 1239
E-mail: gepcuk@gepc.com

GE CONSUMER & INDUSTRIAL
POWER PROTECTION
Nieuwevaart 51
B-9000 Gent - Belgium
Tel. +32/9 265 21 11
Fax +32/9 265 28 00
E-mail: gepcbel@gepc.com