
				Spec. Data Sheet					
Quote Nr.		DSV	1.6.06	Project					
Customer				End user					
RFQ Nr.				EPC (if any)					
Item	Service			Item Nr.	1	Quantity	2		
	TAG	NEW TAG							
Main Applied Rules	PED (2014/68/UE) Cat.	ART.4 PAR. 3	ATEX (2014/34/UE) Cat.	GR.2 CAT.2 GD	NACE Requirement	Not required			
	Other applied rules		(Selection)						
General	Piping diameter / Schedule	1" - Schedula 40		Req. Temperature (Env. / Fluid)	20 C / 20 C				
	Req. Body Design P (min/Max)			Req. Body Design T (min/Max)					
	Fluid / Fluid State	/ Liquid							
Service Input	Sizing Conditions	Normal	Units	Min	Units	Max	Units		
	Flow Rate	330,0000	kg/h	100,0000	kg/h	450,0000	kg/h		
	Upstream Pressure	11,0000	bar.g	11,0000	bar.g	11,0000	bar.g		
	Downstream Pressure	0,5000	bar.g	0,5000	bar.g	0,5000	bar.g		
	Delta P	10,5000	bar	10,5000	bar	10,5000	bar		
	Temperature	85,0000	C	85,0000	C	85,0000	C		
	Density	970,0000	kg/m3	970,0000	kg/m3	970,0000	kg/m3		
	Viscosity	1,0000	cP	1,0000	cP	1,0000	cP		
Viscosity kinematic	1,030928	cst	1,030928	cst	1,030928	cst			
Service Results	Remarks								
	CV - calculated	0,1242		0,0376		0,1693			
	CV - oversized	0,1490		0,0451		0,2032			
	Set Pressure	11,0000	bar.g	11,0000	bar.g	11,0000	bar.g		
	Noise level at 1 m.	31,3321	dBA	22,6934	dBA	33,5823	dBA		
	Velocity on inlet line	0,1696	m/s	0,0514	m/s	0,2313	m/s		
	Velocity on outlet line	0,1696	m/s	0,0514	m/s	0,2313	m/s		
Offset % (abs.lift mm)	Closure + lockup -10,8 (0,1)		Referred to normal case -0,5 (0,0)		Referred to normal case 0,3 (0,2)				
Type/Name	Globe	UBS-V/AF2/130		Valve Function		Relief			
BODY	Inlet / Outlet Size	1"		Inlet / Outlet conn.	ANSI 300RF				
	Body material	ASME SA-216 WCC		Face Finish	125-250 aarh				
				Gaskets	REINFORCED GRAPHITE WITH S.S.				
				Balancing System (if appl.)	Not Required				
	Body Cover material	ASME SA-216 WCC							
	Bonnet (if applicable)	N.A.		Packing mat. / Type	N.A.				
			Face to Face mm (in.)	197 (7,756)	Std.	ISA			
TRIM	Nozzle - Plug Nr.	8		Stem Guide material	17-4 PH				
	Selected Cv	0,33		Plug material	ASME SA-479 316				
	Leakage Class [FCI 70-3]	IV		Seal - Disc material	316 S.S.				
	Seats Nr.	1		Seat material	ASME SA-479 316				
	Flow action	Close		Characteristic	Quick opening				
ACTUATOR	Actuator size	130		Spring Range	8,1 : 22,1 bar.g (Spring code: 00101)				
	Max operating P / T	25,0 bar.g / 455,0 C		Inverse Mount. (if app.)	Not required				
	Spring case material	ASME SA-216 WCC		Action on fail	Close				
	Diaphragm material	316 S.S.		Press.sensing/Conn.	Internal				
	N° of diaphragms	1		Construction tightness	Closed				
	Spring material	CHROME ALLOY		Condensate tank (if app.)	Not Required				
	Actuator Studs & screws	ASME SA-193 B7		Lower diaphragm case	ASME SA-216 WCC				
	Actuator Nuts	ASME SA-194 2H		Vent Hole / Connection	YES / 1/4"NPT				
Tubing & Fittings (if appl.)	N.A.		Bug screen on vent hole	NO					
Gauge (if appl.)	NO		Diaph. protection device material and set (if appl.)	NO	N.A.	@ SetP. - Spring:			
Other Accessories (if applicable)									
Max flow at 100% opening	877,12 kg/h		Name plate material	Stainless steel					
Painting	Body painting sys.-cycle			Actuator painting sys.-cycle					
	Body Finish Color (RAL)			Actuator Finish Color (RAL)					
Notes	Please see the "ITEM SPECIFIC NOTES" on next page.						MOD.DS.REV.01		
Filled by	Salvoni	e-mail		Phone		Date	28 Dec 2020	Page	1 / 2

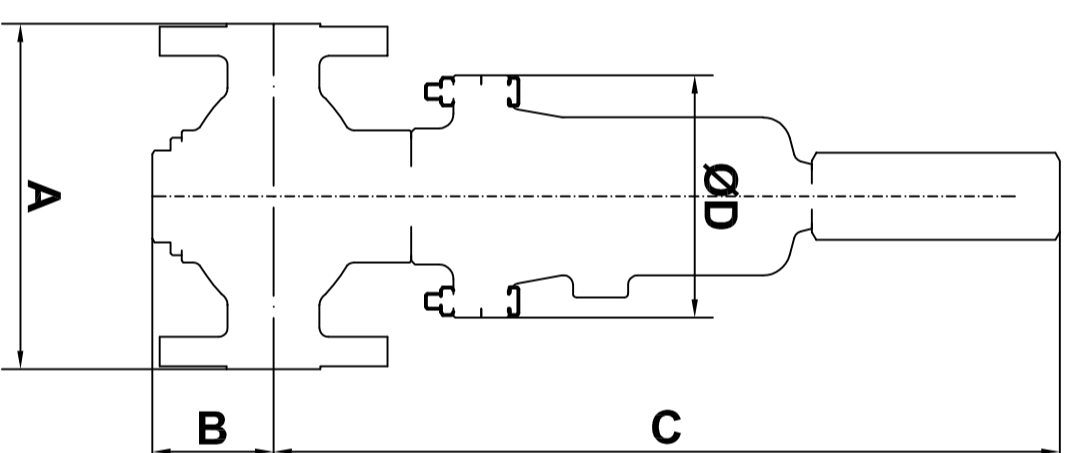
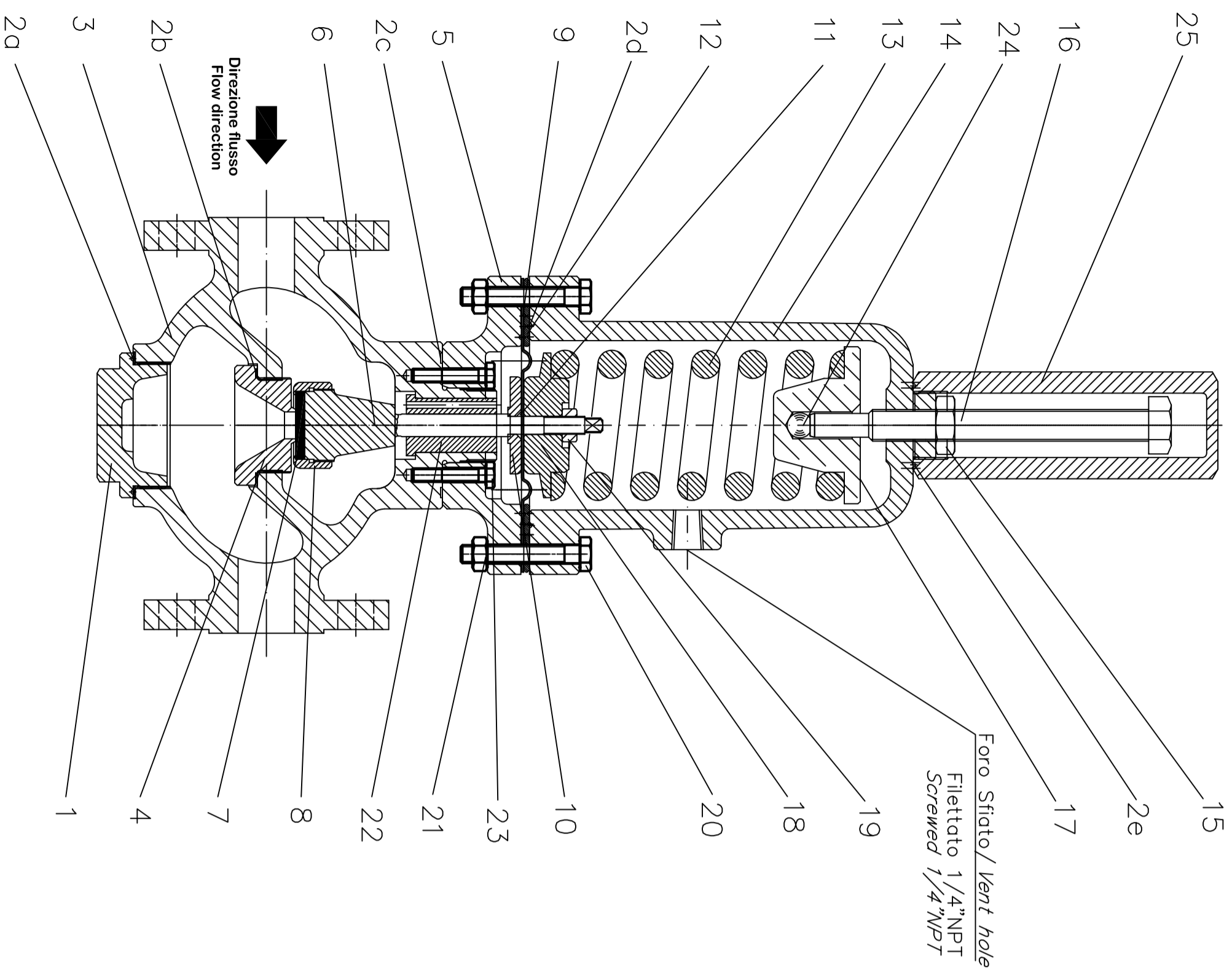


TABELLA DIMENSIONI / DIMENSION TABLE

SCARTAMENTI (mm) / FACE TO FACE (inches)

DN / ND	CONNESSIONI ANSI / ANSI CONNECTIONS	300	600
15	184 / 7.25"	190 / 7.50"	203 / 8.00"
20	184 / 7.25"	194 / 7.62"	206 / 8.12"
25	184 / 7.25"	197 / 7.75"	210 / 8.25"

DN / ND	CONNESSIONI ANSI / ANSI CONNECTIONS	300 RJ	600 RJ
15	N.A.	202 / 7.95"	203 / 8.00"
20	N.A.	206 / 8.12"	206 / 8.12"
25	197 / 7.75"	210 / 8.25"	210 / 8.25"

**Varianti su richiesta
Options on request**

1 1/8" filettato GAS
1/8" BSP Screwed

O'ring
Preso d'impulso esterno
External pressure sensing

2 Dispositivo di sicurezza
Safety device

Funzione / Function
Preserva l'integrità della membrana
Prevents diaphragm overpressure failure

3 Manometro
Pressure Gauge

B	C	D
75	423	130
3"	16 5/8"	5 1/4"

Lista delle parti / Parts list

- 1 - Coperchio corpo / Body cover
- *2 - Set guarnizioni / Gaskets set
- 3 - Corpo valvola / Valve body
- 4 - Sede / Seat
- 5 - Flangia inferiore attuatore / Lower diaphragm case
- 6 - Otturatore / Plug
- *7 - Disco otturatore / Plug disc
- 8 - Ghiera otturatore / Plug fastener ring
- *9 - Membrana / Diaphragm
- 10 - Piattello membrana inferiore / Lower diaphragm sealing plate
- *11 - Guarnizione O'ring / O'ring gasket
- 12 - Anello inferiore / Actuator lower ring
- 13 - Molla / Spring
- 14 - Custodia molla / Spring case
- 15 - Dado vite di taratura / Adjusting screw locknut
- 16 - Vite di taratura / Adjusting screw
- 17 - Piattello guidamolla superiore / Upper spring washer
- 18 - Piattello guidamolla inferiore / Lower spring washer
- 19 - Dado di blocco otturatore / Plug locknut
- 20 - Viti / Screws
- 21 - Dadi / Nuts
- 22 - Bussola guida / Plug guide bushing
- 23 - Viti / Screws
- 24 - Sfera / Ball
- 25 - Cappello / Cap

* Ricambi consigliati / Recommended spare parts

CONFIDENTIAL - RESTRICTED USE

THIS DOCUMENT IS THE PROPERTY OF THE COMPANY AND CONTAINS CONFIDENTIAL PROPRIETARY INFORMATION WHICH MUST NEITHER BE MADE AVAILABLE NOR DISCLOSED TO OR DISCUSSED WITH ANYONE OUTSIDE OF THE COMPANY, ITS DIVISIONS AND WHOLLY-OWNED AFFILIATES NOR USED FOR ANY PURPOSE EXCEPT AS AUTHORIZED BY THE COMPANY UNDER DULY-EXECUTED AGREEMENTS PERMITTING SUCH DISCLOSURE OR USE, AND THE DOCUMENT SHOULD BE SAFEGUARDED TO PREVENT SUCH UNAUTHORIZED AVAILABILITY, DISCLOSURE, OR DISCUSSION.

REV.	DATE	DESCRIPTION	CHK'D	APP'D	CLIENT APP'D
4	18/OCT/16	CA Added table for face RJ			
3	10/DEC/13	MM Inverted spring case downstream vent hole			
2	01/OCT/12	BF Modified parts list and added gaskets table			
1	14/JUN/11	PA Aggiunta direzione fluido / Added flow direction			
0	21/JUN/10	PE Emissione / Issue			



Tipo valvola / Valve type

UBS-ISA/ACTUATOR/0130--FLANGED
ACTUATOR/CARBON-STEEL-AND-STAINLESS-STEEL-WITH-CAP

DRAMA BY PEROTTONI	DATE 21/JUN/10	SCALE 1:1	APP'D BY	DICENNARO
DRAWING NO. 93499.DWC				
			REV. NO.	4

2 - SET GUARNIZIONI / GASKETS SET

d	63 x 56 x 1,5
b	49 x 42 x 1
c	63 x 56 x 1,5
d	130 x 72 x 1
e	39 x 30 x 1
7	30 x 4

DATI E RIFERIMENTI / DATA AND REFERENCES

ORDER NUMBER
TAG NUMBER
SERIAL NUMBER
ORDER CONFIRM

CARATTERISTICHE VALVOLA / FEATURES / VALVE

SIZE IN/OUT
CONNECTION IN/OUT
ACT. MODEL
ACT. RANGE
SPRING RANGE
SPRING N°
DIAPHRAGM MATERIAL
GASKET MATERIAL
DISC MATERIAL
SET PRESSURE
WEIGHT