



**milkrite**<sup>®</sup>  
feel the difference

**PRODUCT  
CATALOGUE  
2015**

**MIDDLE EAST**

[www.milkrite.com](http://www.milkrite.com)

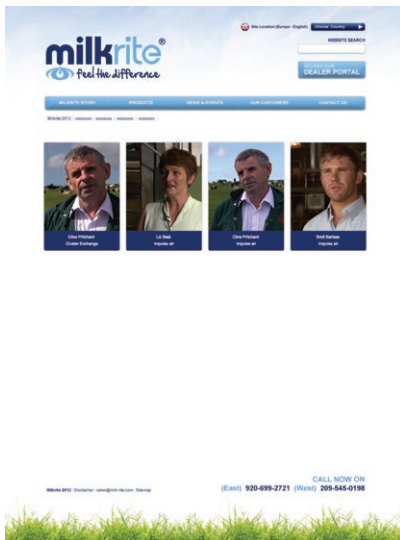
# milkrite®

feel the difference

www.milkrite.com



Visit our website for all the up to date features on products and technical information to help you improve milking efficiency



■ See what our customers have to say about our products



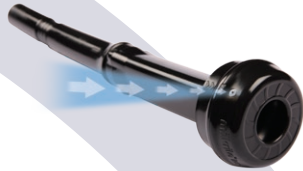
■ News and updates on the latest technology



■ Technical videos that explain how the products work



# CONTENTS



Page No.

## 02. LINERS

- 02. IMPULSE AIR - MOUTHPIECE VENTED TRIANGULAR LINERS
- 04. IMPULSE - NON-VENTED TRIANGULAR LINERS
- 05. ULTRALINER - ROUND LINER RANGE

## 06. TUBING

- 06. ULTRACLEAN TUBING
- 06. SILICONE TUBING
- 07. TRANSFLOW TUBING
- 08. SHORT AIR TUBES

## 09. MILK FILTERS

- 09. ULTRACLEAN MILK FILTERS
- 10. KENAG MILK FILTERS
- 10. TUFFY MILK FILTERS

## 11. ACCESSORIES

- 11. WASH SYSTEM SPARE PARTS
- 12. SHELLS AND WEIGHTS

# impulseAir®

## HOW DOES impulseAir® WORK?

The **impulseAir** system is a unique milking technology. We introduce the air behind the milk to efficiently move the milk away from the teat end. Impulse Air liners reduce mouthpiece vacuum which results in much reduced teat congestion. So we allow the vacuum to do what it is meant to do - remove the milk - without damaging the teat. Keeping teats dry during milking, with no splash back of milk, reduces the bacterial challenge.

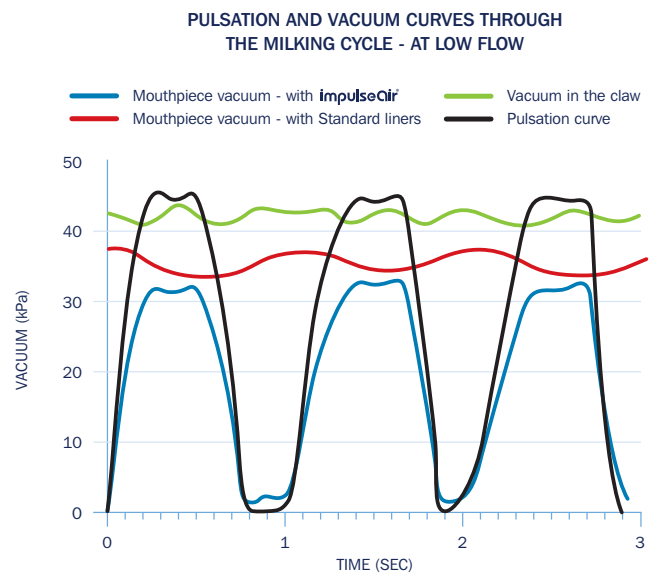


Chart shows reduced vacuum acting on the teat when using **impulseAir**. Most damage occurs to the teat at low milkflow. The vented liner system reduces the vacuum forces on the teat throughout the milking cycle.

Impulse Air's vented triangular technology provides a more uniform closing action on the cows teat end. This results in less hyperkeratosis. The impact resistant shell has a triangular shaped interior to reduce the total air volume between the shell and the liner. This leads to a more responsive opening and closing of the liner, which optimises the milk and the rest phases of pulsation.

- GENTLE MESSAGE ON THE TEAT
- BETTER GRIP TO THE TEAT
- LESS LINER MOVEMENT GIVING GENTLE OPENING AND CLOSING PHASES
- LIGHTER WEIGHT CLUSTERS FOR LESS STRESS ON THE TEAT
- MORE UNIFORM ACTION ON THE COW'S TEAT END RESULTS IN LESS HYPERKERATOSIS

Triangular liners have the advantage that they will fit a much wider range than conventional liners - this is to do with the way they grip the teat. Even so - the Impulse Air range comes in two generic size types. The IP10 range is designed for a wider teat range which is a feature of many European herds. The IP20 range is a narrow bore liner specifically designed for smaller and shorter teats and for easy milking cows with a high milk flow rate. Performance is significantly improved when we can make the liner more closely match the average teat size.

To learn more about the published documents and benefits of Impulse Air, please visit the reference section on our website at [www.milkrite.com/milking-experts](http://www.milkrite.com/milking-experts)

# impulseAir®

## PRODUCT RANGE



PROVEN TO IMPROVE TEAT CONDITION, REDUCE SOMATIC CELL COUNT AND REDUCE MASTITIS

MILKRITE REFERENCE	MILKING LIFE	A (mm)	B (mm)	C (mm)	D (mm)
--------------------	--------------	--------	--------	--------	--------

### NARROW BORE LINER RANGE

IP4-LM-MV	2500	278	21	10	56
IP23-AIR	2500	278	22	15	56
IP25-AIR	2500	278	22	10.1	56



THE IP20 RANGE IS ONLY AVAILABLE WITH MOUTHPIECE VENT

### IP10 LINER RANGE

IP10-AIR	2500	312	23	9	59
IP13-AIR	2500	304	23	13	59
IP15-AIR	2500	320	23	10	59

Products featured come in packs of 4

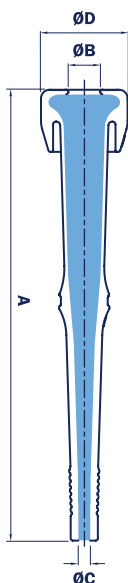
MILKRITE REFERENCE	DESCRIPTION
--------------------	-------------

### CLAW TYPES

IP10 / IP4-LM	Fits claws with 12-13mm OD nipples with square cut	
IP13 / IP23	Fits Harmony type claws	
IP15 / IP25	Fits claws with 12-13mm OD nipples with angled cut	

#### SPECIFICATIONS:

- A** Total Length
- B** Orifice Diameter
- C** Inside Milk Tube Diameter
- D** Hood Diameter



Conform to stringent BfR and RAL guidelines for materials in contact with milk.

See Impulse Air in action at [www.milkrite.com](http://www.milkrite.com)

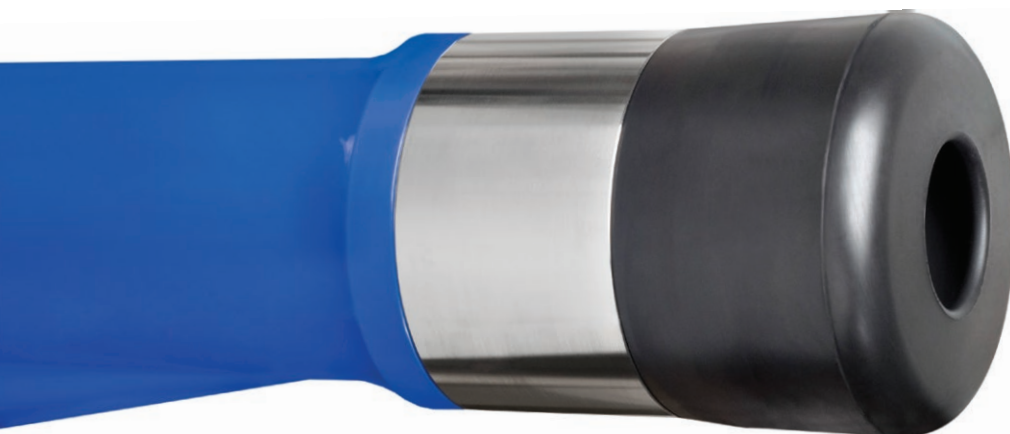
[www.milkrite.com](http://www.milkrite.com)

References to other manufacturers by their company names, trademarks or product references are for product identification purposes and are used only to indicate the intended purpose of Milkrite products and their compatibility with the equipment of those manufacturers.



# impulse®

## PRODUCT RANGE



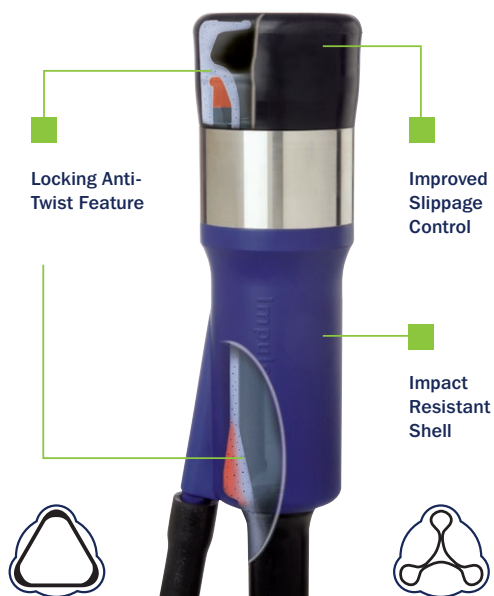
- FEWER SLIPS, SQUEALS AND KICK-OFFS
- IMPROVED TEAT END CONDITION

MILKRITE REFERENCE	MILKING LIFE	A (mm)	B (mm)	C (mm)	D (mm)
--------------------	--------------	--------	--------	--------	--------

### IP10 LINER RANGE - NON-VENTED

IP10	2500	312	23	9	59
IP13	2500	304	23	13	59
IP15	2500	320	23	10	59

Products featured come in packs of 4



#### IMPULSE TRIANGULAR COMBINATION

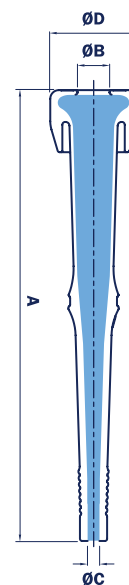
REDUCES AIR VOLUME FOR MORE RESPONSIVE OPENING AND CLOSING OF LINER

#### SPECIFICATIONS:

- A** Total Length
- B** Orifice Diameter
- C** Inside Milk Tube Diameter
- D** Hood Diameter



Conform to stringent BfR and RAL guidelines for materials in contact with milk.



# ultraliner® PRODUCT RANGE

PARLOUR MANUFACTURER REFERENCE	MILKRITE REFERENCE	MILKING LIFE	A (mm)	B (mm)	C (mm)	D (mm)
--------------------------------	--------------------	--------------	--------	--------	--------	--------

## BOUMATIC COMPATIBLE

Magnum 400M	BM400M	1200	281	21.8	23	10.2
Flex50	BM50F	2500	301	22	25	10.6
R1EX	BME XU	2500	300	21.4	23	10.6
DK1X	BM1XU	2500	266	21.8	20.5	10.6

## STRANGKO COMPATIBLE

3426010/10	STRKO1	2500	300.5	20.9	22.3	10.6
------------	--------	------	-------	------	------	------

## DELAVAL COMPATIBLE

960036-80	AL36U	2500	296.7	22.3	24	11
960038-01	AL38U	2500	292.6	22.3	20	11
999007-03	DL007U	2500	310	26.5	20	12.5
964008-01	DL008U	2500	305	26.5	22	12.6
999009-01	DL009U	2500	310	26.5	20	12.5
960016-01	DL016U	2500	293	22.4	24	8
Original M-R part	DL016U-10	2500	293	22	24	10
928179-01	DL179U	2500	295	19.4	23	8.5
999295-01	DL295U	2500	313	19.4	24	8
Original MR Part	DL295U-10	2500	313	19.4	24	10
01,08,WC01	01BUX	2500	266.9	29.2	20.6	8.3

## GEA COMPATIBLE

7021-2725-220	WF220U	2500	172.5	28.5	22.6	N/A
7021-2725-240	WS240U	2500	334	28.5	23	9
7021-2725-270	WS270U	2500	326	29.3	21.8	10
7021-2725-080	WF080U	2500	163.8	30.2	20.3	N/A
10062	JF62ULT	2500	274.4	23.9	19.6	9.9

Products featured come in packs of 4

# ultraliner® TLC TRIANGULAR LINERS

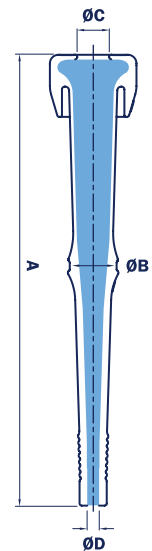
PARLOUR MANUFACTURER REFERENCE	MILKRITE REFERENCE	MILKING LIFE	A (mm)	B (mm)	C (mm)	D (mm)
Original MR Part	TLC SB2000	268	22.5	20.2	10.5	22.5
Original MR Part	TLC D2000NC	283	29.5	8.9	8.9	29.5

Products featured come in packs of 4



## SPECIFICATIONS:

- A** Total Length
- B** Lock Ring
- C** Mouthpiece Orifice
- D** Milk Nipple



Conform to stringent BfR and RAL guidelines for materials in contact with milk.

[www.milkrite.com](http://www.milkrite.com)

References to other manufacturers by their company names, trademarks or product references are for product identification purposes and are used only to indicate the intended purpose of Milkrite products and their compatibility with the equipment of those manufacturers.

# DAIRY TUBING

## ULTRACLEAN PRODUCT RANGE

The inner white layer of a special thermoplastic vulcanizate (TPV) rubber has **superb hygienic properties** and is resistant to butterfat and acids. Butterfat cannot pass through this layer, so the tube stays clean.



The black rubber outer provides high **durability** and **flexibility** and resists ozone cracking commonly seen in dairy tubing.



## HI-TECH MANUFACTURING

- HELPS MAINTAIN MILK QUALITY
- RESISTS CRACKING
- RESISTS THE BUTTERFATS IN THE MILK
- LONG LASTING

ITEM NO.	IMPERIAL MEASUREMENT	METRIC MEASUREMENT	TYPE	UNIT
----------	----------------------	--------------------	------	------

### ULTRACLEAN MILK TUBING

6505	5/8" I.D. x 65'	15.9mm x 19.81m	ULTRACLEAN	Each
6511	3/4" I.D. x 65'	16.05mm x 19.81m	ULTRACLEAN	Each

## SILICONE PRODUCT RANGE

ITEM NO.	IMPERIAL MEASUREMENT	METRIC MEASUREMENT	COLOR	UNIT
----------	----------------------	--------------------	-------	------

### MILKRITE SILICONE TUBING

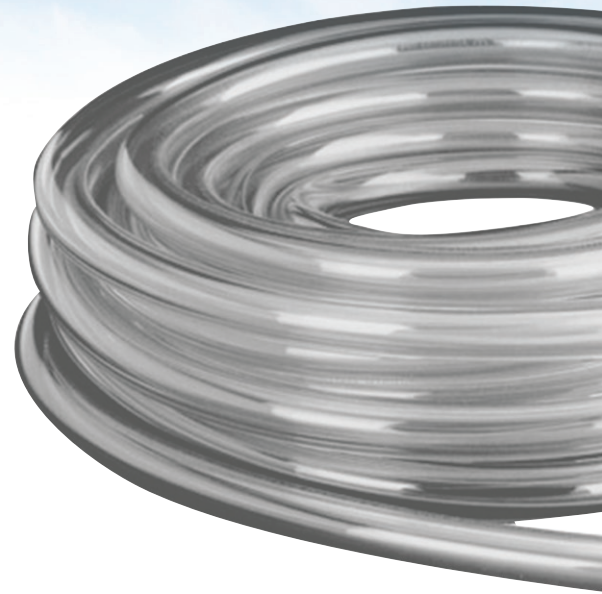
9022SC	9/16" I.D. x 100'	14.28mm x 30.48m	Clear	Each
9032SB	5/8" I.D. x 100'	15.9mm x 30.48m	Blue	Each
9032SC	5/8" I.D. x 100'	15.9mm x 30.48m	Clear	Each
9042SC	3/4" I.D. x 100'	19.05mm x 30.48m	Clear	Each
9042SB	3/4" I.D. x 100'	19.05mm x 30.48m	Blue	Each
9052SC	7/8" I.D. x 100'	22.2mm x 30.48m	Clear	Each



# DAIRY TUBING

## TRANSFLOW PLASTIC

### PRODUCT RANGE



This lightweight flexible plastic tubing meets all FDA and 3-A standards. Easy-to-handle tubing for milk tubes and stanchion hoses. Easy to clean. Durable; won't age, flake, or check.

ITEM NO.	IMPERIAL MEASUREMENT	METRIC MEASUREMENT	PACKAGING	UNIT
----------	----------------------	--------------------	-----------	------

#### TRANSFLOW PLASTIC MILK (M-34R) TUBING\*

8002	7/16" I.D. x 100'	11.1mm x 30.48m	Box	Each
8012	1/2" I.D. x 100'	12.7mm x 30.48m	Box	Each
8022	9/16" I.D. x 100'	14.3mm x 30.48m	Box	Each
8023	9/16" I.D. x 500'	14.3mm x 152.4m	Reel	Each
8032	5/8" I.D. x 100'	15.9mm x 30.48m	Box	Each
8033	5/8" I.D. x 500'	15.9mm x 152.4m	Reel	Each
8042	3/4" I.D. x 100'	19.05mm x 30.48m	Box	Each
8052	7/8" I.D. x 100'	22.2mm x 30.48m	Box	Each
8062	1" I.D. x 100'	25.4mm x 30.48m	Box	Each
8072	1 1/2" I.D. x 60'	38.1mm x 18.29m	Box	Each

#### TRANSFLOW CLEAR PLASTIC VACUUM (A-24) TUBING\*

8202	1/4" I.D. x 100'	6.35mm x 30.48m	Box	Each
8212	9/32" I.D. x 100'	7.14mm x 30.48m	Box	Each
8221	3/8" I.D. x 100' Black	9.52mm x 30.48m	Box	Each
8222	3/8" I.D. x 100'	9.52mm x 30.48m	Box	Each
8232	7/16" I.D. x 100'	11.1mm x 30.48m	Box	Each
8242	1/2" I.D. x 100'	12.7mm x 30.48m	Box	Each
8312	1/4" Twin x 100'	6.35mm Twin x 30.48m	Box	Each
8302	9/32" Twin x 100'	7.14mm Twin x 30.48m	Box	Each
8332	9/32" Twin x 500'	7.14mm Twin x 152.4m	Reel	Each
8322	3/8" Twin x 100'	9.52mm Twin x 30.48m	Box	Each

#### TRANSFLOW SHORT PLASTIC AIR TUBES

8400	9/32" I.D. x 9"	7.14mm x 228.6mm	Box	100
8600*	9/32" I.D. x 8"	7.14mm x 203.2mm	Box	100
8500*	1/4" I.D. x 7"	6.35mm x 177.8mm	Box	100

\* Items available from USA only

[www.milkrite.com](http://www.milkrite.com)

References to other manufacturers by their company names, trademarks or product references are for product identification purposes and are used only to indicate the intended purpose of Milkrite products and their compatibility with the equipment of those manufacturers.

# SHORT AIR TUBES

## PRODUCT RANGE



ITEM NO.	IMPERIAL MEASUREMENT	METRIC MEASUREMENT	COMPATIBLE WITH	UNIT
----------	----------------------	--------------------	-----------------	------

### MOULDED SHORT AIR TUBES

1031	3/16" I.D. x 8"	4.76mm x 203.2mm	Fits SURGE	Bags/8, (12 bags/box)
				500 Each
1027	1/4" I.D. x 6 1/2"	6.35mm x 165.1mm	Fits UNIVERSAL, CHORE-BOY	Bags/8, (12 bags/box)
				500 Each
1028	1/4" I.D. x 7 1/2"	6.35mm x 190.5mm	Fits BOU-MATIC	Bags/8, (12 bags/box)
				500 Each
1030	1/4" I.D. x 9"	6.35mm x 228.6mm	Fits BOU-MATIC	Bags/8, (12 bags/box)
				500 Each
1033	9/32" I.D. x 7 1/2"	7.14mm x 190.5mm	Fits DE LAVAL, NU PULSE	Bags/8, (12 bags/box)
				500 Each
1034	9/32" I.D. x 9"	7.14mm x 228.6mm	Fits DE LAVAL	Bags/8, (12 bags/box)
				500 Each



# MILK FILTERS

## PRODUCT RANGE

The non-woven fibers of Ultraclean filters are resin bonded to perform under pressure... withstanding even the toughest use conditions. Ultraclean filters are not only strong, they also provide maximum sediment retention. In fact, Ultraclean filters stop particulate matter as small as 35 to 50 microns, or about the width of a human hair! And with fast wet-out and fast flow... Ultraclean filters really perform. Ultraclean filters will help today's milking systems operate at peak efficiency.

- FAST FLOW
- SUPERIOR WET STRENGTH
- EASY TO INSTALL
- FAST WET-OUT
- ECONOMICAL
- EXCELLENT SEDIMENT RETENTION



## MILK FILTERS

ITEM NO.	IMPERIAL MEASUREMENT	METRIC MEASUREMENT	UNIT
----------	----------------------	--------------------	------

### ULTRACLEAN FILTERS - SOCKS

F 480U	4 7/8" x 33 1/2"	123.8mm x 850.9mm	50/Box - 9 Boxes/Case
F 760U	2" x 24"	50.8mm x 609.6mm	100/Box - 6 Boxes/Case
F 770U	2 1/4" x 24"	57.1mm x 609.6mm	100/Box - 6 Boxes/Case
F 720U	3" x 23 3/8"	76.2mm x 593.72mm	100/Box - 6 Boxes/Case

### ULTRACLEAN FILTERS - TUBES

F 470U	4 7/8" x 17"	123.8mm x 431.8mm	50/Box - 10 Boxes/Case
F 380U	4 7/8" x 33 1/2"	123.8mm x 850.9mm	50/Box - 9 Boxes/Case
F 390U	4 7/8" x 36"	123.8mm x 914.4mm	50/Box - 9 Boxes/Case

[www.milkrite.com](http://www.milkrite.com)

References to other manufacturers by their company names, trademarks or product references are for product identification purposes and are used only to indicate the intended purpose of Milkrite products and their compatibility with the equipment of those manufacturers.

ITEM NO.	IMPERIAL MEASUREMENT	METRIC MEASUREMENT	DESCRIPTION	UNIT
----------	----------------------	--------------------	-------------	------

### KENAG FILTERS - DISKS

KA D110	6 1/2"	165.1mm	Non-Gauze Disks	100/Box - 36 Boxes/Case
KA D506	4 9/16"	115.8mm	In-Line Disks	100/Box - 36 Boxes/Case

### KENAG FILTERS - TUBES

KA D547	4 7/8" x 17"	123.8mm x 431.8mm	Break Proof Tubes	50/Box - 10 Boxes/Case
KA D538	4 7/8" x 33 1/2"	123.8mm x 850.9mm		50/Box - 9 Boxes/Case
KA D539	4 7/8" x 36"	123.8mm x 914.4mm		50/Box - 9 Boxes/Case

### KENAG FILTERS - SOCKS

KA D548	4 7/8" x 33 1/2"	123.8mm x 850.9mm	Break Proof Socks For Moderate to High Pressure Pipeline Systems	50/Box - 9 Boxes/Case
KA D549	4 7/8" x 36"	123.8mm x 914.4mm		50/Box - 9 Boxes/Case
KA D576	2" x 24"	50.8mm x 609.6mm		100/Box - 6 Boxes/Case
KA D577	2 1/4" x 24"	57.1mm x 609.6mm		100/Box - 6 Boxes/Case
KA D572	3" x 23 3/8"	76.2mm x 593.7mm		100/Box - 6 Boxes/Case
KA D579	2 1/4" x 12"	57.1mm x 304.8mm		100/Box - 12 Boxes/Case
KA D584	2 1/4" x 12"	57.1mm x 304.8mm	Ultra Flow Socks	100/Box - 12 Boxes/Case
KA D591	2 3/4" x 23 1/2"	69.8mm x 596.9mm		100/Box - 6 Boxes/Case
KA D550 *	2 1/4" x 5 1/2"	57.1mm x 139.7mm	Pre-Filter (Defoaming) Socks	100/Box - 12 Boxes/Case
KA D570	3 1/2" x 14"	88.9mm x 355.6mm		100/Box - 12 Boxes/Case
KA D569	5" x 20"	127mm x 508mm		100/Box - 12 Boxes/Case

### KENAG FILTERS - PIPELINE INSERTS

KA D773	3"	76.2mm	Sani Guard Inserts	100/Bag - 10 Bags/Case
---------	----	--------	--------------------	------------------------

### KENAG FILTERS - FILTER ROLLS

KA D609	12" x 200'	304.8mm x 61m	Filter Rolls - Non Gauze	1 Roll/Box - 6 Boxes/Case
---------	------------	---------------	--------------------------	---------------------------

ITEM NO.	IMPERIAL MEASUREMENT	METRIC MEASUREMENT	DESCRIPTION	UNIT
----------	----------------------	--------------------	-------------	------

### TUFFY FILTERS - SOCKS

SF 4179	2" x 24"	50.8mm x 609.6mm	Tuffy Filter Socks	100/Box - 6 Boxes/Case
SF 4185	2 1/4" x 24"	57.1mm x 609.6mm	Tuffy Filter Socks	100/Box - 6 Boxes/Case
SF 4175	3" x 23 1/2"	76.2mm x 596.9mm	Tuffy Filter Socks	100/Box - 5 Boxes/Case
SF 4225	3 1/4" x 14"	88.9mm x 355.6mm	Tuffy Filter Socks	50/Box - 9 Boxes/Case
SF 4231	3 1/4" x 12"	88.9mm x 304.8mm	Tuffy Filter Socks	50/Box - 9 Boxes/Case
SF 4197	4 7/8" x 17"	123.8mm x 431.8mm	Tuffy Filter Socks	50/Box - 9 Boxes/Case
SF 4190	4 7/8" x 28"	123.8mm x 711.2mm	Tuffy Filter Socks	50/Box - 9 Boxes/Case
SF 4192	4 7/8" x 33 1/2"	123.8mm x 850.9mm	Tuffy Filter Socks	50/Box - 9 Boxes/Case
SF 4307	5" x 17"	127mm x 431.8mm	Tuffy Filter Socks	50/Box - 9 Boxes/Case

### TUFFY FILTERS - SLEEVES

SF 4196	4 7/8" x 17"	123.8mm x 431.8mm	Tuffy Filter Sleeves	50/Box - 9 Boxes/Case
SF 4643	4 7/8" x 33 1/2"	123.8mm x 850.9mm	Tuffy Filter Sleeves	50/Box - 9 Boxes/Case
SF 4605	4 7/8" x 36"	123.8mm x 914.4mm	Tuffy Filter Sleeves	50/Box - 9 Boxes/Case
SF 4603	3 5/16" x 22 1/4"	84.1mm x 565.1mm	Tuffy Filter Sleeves	100/Box - 5 Boxes/Case

### TUFFY FILTERS - ROLLS

SF 5224	12" x 200'	304.8mm x 61m	Tuffy Filter Rolls	6/Case
SF 5236	18" x 200'	457.2mm x 61m	Tuffy Filter Rolls	6/Case



# ACCESSORIES

## WASH SYSTEMS SPARE PARTS

MILKRITE REFERENCE	UNIT	DESCRIPTION
--------------------	------	-------------

### COMPONENTS FOR **NARROW BORE WASH SYSTEMS**

M06AV051XZ	EACH	IPJC4 - IMPULSE WASH CUP TO FIT DELAVAL ROSEBUD/CANDLESTICK, WSURGE & MILKRITE WASHTRAYS - MILKRITE IMPULSE NARROWBORE LINER COMPATIBLE
M06AV037XZ	EACH	WASH STEM - DELAVAL REPLACEMENT - STEM AND CONNECTOR
M06AV043XZ	EACH	IPJC2 - IMPULSE JETTER CUP FOR BOUMATIC WASH TRAY CONVERSIONS
M06AV046XZ	EACH	VENTED JETTER DISTRIBUTOR
M06AV055XZ	EACH	TP58 - T PIECE SMALL (16MM)
M06AV053XZ	EACH	7370-MV - VENTED DUCK BILL DRAIN VALVE

### COMPONENTS FOR **IP10 WASH SYSTEMS**

M06AV039XZ	EACH	SMALL WASH CUP - FITS IMPULSE IP10 VENTED AND NON VENTED LINERS (MILKRITE AND DELAVAL COMPATIBLE)
M06AV037XZ	EACH	WASH STEM - DELAVAL REPLACEMENT - STEM AND CONNECTOR
M06AV002XZ	EACH	7340 - JETTER CUP - FLAT TOP DESIGN - 40MM (BOUMATIC COMPATIBLE)
M06AV009XZ	EACH	7322 - JETTER CUP - OPEN CUP DESIGN - 57MM - (GROOVE FOR TEE ASSEMBLY) (BOUMATIC COMPATIBLE)
M06AV046XZ	EACH	JETTER DISTRIBUTOR VENTED
M06AV054XZ	EACH	TP34 - T PIECE LARGE (19mm)
M06AV020XZ	EACH	7370 - DUCKBILL DRAIN VALVE
M06AV053XZ	EACH	7370-MV - VENTED DUCK BILL DRAIN VALVE

M06AV051XZ



M06AV039XZ



M06AV009XZ



[www.milkrite.com](http://www.milkrite.com)

References to other manufacturers by their company names, trademarks or product references are for product identification purposes and are used only to indicate the intended purpose of Milkrite products and their compatibility with the equipment of those manufacturers.

# the new impulseAir<sup>®</sup> shell



- Better and easier grip
- Anti-twist mechanism to keep the liner correctly positioned
- Triangular inner profile to reduce the air space between the triangular liner and the shell. This makes the liner more responsive to the pulsation signals
- Designed to take variable weight rings so that you can tailor the weight of your cluster
- Lightweight to reduce stress on the cow - and the herdsman



# ACCESSORIES

## IMPULSE AND IMPULSE AIR RANGE

### IMPULSE SHELLS AND WEIGHTS

**NEW**

MILKRITE REFERENCE	UNIT	DESCRIPTION
--------------------	------	-------------

#### NARROW BORE RANGE

M10AV060XZ	EACH	SHELLBODY, BLUE, TRIANGULAR, NARROWBORE
M10AV062XZ	EACH	BLUE PLASTIC WEIGHT, NARROWBORE
M10AV061XZ	EACH	STAINLESS STEEL WEIGHT, NARROWBORE

MILKRITE REFERENCE	UNIT	DESCRIPTION
--------------------	------	-------------

#### IP10 RANGE

M10AV005XZ	EACH	SHELLBODY, BLUE, TRIANGULAR
M10AV013XZ	EACH	BLUE PLASTIC WEIGHT
M10AV006XZ	EACH	STAINLESS STEEL WEIGHT



- **LIGHTWEIGHT** TO REDUCE STRESS ON THE COW - AND THE HERDSMEN
- **DESIGNED TO TAKE VARIABLE WEIGHT RINGS** SO THAT YOU CAN TAILOR THE WEIGHT OF YOUR CLUSTER

- **TRIANGULAR INNER PROFILE** TO REDUCE THE AIR SPACE BETWEEN THE TRIANGULAR LINER AND THE SHELL. THIS MAKES THE LINER MORE RESPONSIVE TO THE PULSATION SIGNALS
- **ANTI-TWIST MECHANISM** TO KEEP THE LINER CORRECTLY POSITIONED

[www.milkrite.com](http://www.milkrite.com)

References to other manufacturers by their company names, trademarks or product references are for product identification purposes and are used only to indicate the intended purpose of Milkrite products and their compatibility with the equipment of those manufacturers.



#### MILKRITE USA

North America East:  
110 Lincoln Street / PO Box 9 /  
Johnson Creek / Wisconsin /  
53038-0009 / USA  
Tel: +1 920 699 3431  
Fax: +1 920 699 2344

North America West:  
4824 Enterprise Way / Modesto /  
California / 95356 / USA  
Tel: +1 209 545 0198  
Fax: +1 209 545 0272

#### MILKRITE EUROPE

Hampton Park West / Semington Road /  
Melksham / Wiltshire / SN12 6NB / UK  
Tel: +44 (0) 1225 89 64 26  
Fax: +44 (0) 1225 89 63 07

#### MILKRITE MIDDLE EAST

Please contact either Milkrite Europe  
or Milkrite USA for any enquiries

#### MILKRITE CHINA

Avon Dairy Solutions (Shanghai)  
International Trading Co Ltd.  
B1/Building 44 / D12 / No.207 Taigu Road /  
Waigaoqiao Free Trade Zone / Pudong District /  
Shanghai / China / 200131  
Tel: +86 21 22060366  
Fax: +86 21 22060369

#### MILKRITE SOUTH AMERICA

Rua José Antonio de Oliveira, 60  
Jardim das Araucárias  
Castro-PR  
Brazil  
CEP 84174-620  
Tel: +55 51 3078 0006

Dealer Stamp

[www.milkrite.com](http://www.milkrite.com)



The Milkrite name and logo are the registered trademarks of the Avon Rubber p.l.c. group of companies.  
Avon Rubber p.l.c. Registered in England with number 32965 with its registered office at Hampton Park West, Semington Road, Melksham, Wiltshire, SN12 6NB, UK.  
Avon Rubber p.l.c. All rights reserved.